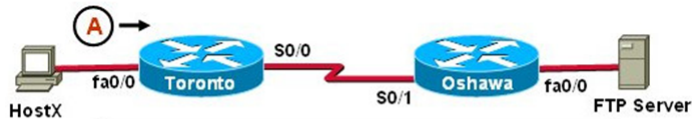


## Cisco 100-105 Exam

### Volume: 347 Questions

#### Question: 1

Refer to the exhibit.



	IP Address	MAC Address
HostA	192.168.1.5	abcd.1123.0045
fa0/0 (Toronto)	192.168.1.1	abcd.2246.0035
fa0/0 (Oshawa)	192.168.7.1	aabb.7777.3333
FTP Server	192.168.7.17	aabb.5555.2222

HostX is transferring a file to the FTP server. Point A represents the frame as it goes toward the Toronto router. What will the Layer 2 destination address be at this point?

- A. abcd.1123.0045
- B. 192.168.7.17
- C. aabb.5555.2222
- D. 192.168.1.1
- E. abcd.2246.0035

Answer: E

#### Question: 2

Which protocol uses a connection-oriented service to deliver files between end systems?

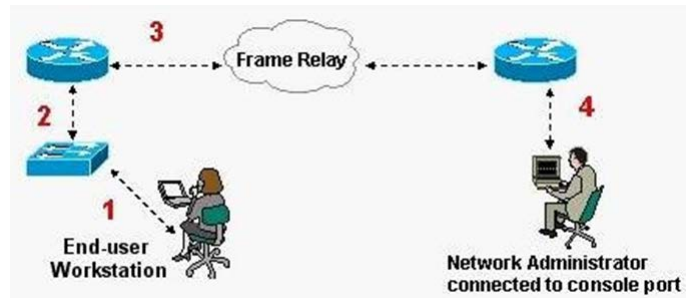
- A. TFTP
- B. DNS
- C. FTP
- D. SNMP
- E. RIP

Answer: C

## Cisco 100-105 Exam

Question: 3

Refer to the exhibit.



What kind of cable should be used to make each connection that is identified by the numbers shown?

A.

- 1 - Ethernet Crossover cable
- 2 - Ethernet straight-through cable
- 3 - Fiber Optic cable
- 4 - Rollover cable

B.

- 1 - Ethernet straight-through cable
- 2 - Ethernet straight-through cable
- 3 - Serial cable
- 4 - Rollover cable

C.

- 1 - Ethernet rollover cable
- 2 - Ethernet crossover cable
- 3 - Serial cable
- 4 - Null-modem cable

D.

- 1 - Ethernet straight-through cable
- 2 - Ethernet Crossover cable
- 3 - Serial cable
- 4 - Rollover cable

E.

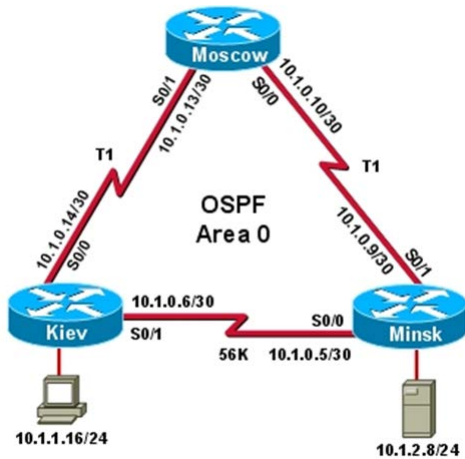
- 1 - Ethernet straight-through cable
- 2 - Ethernet Crossover cable
- 3 - Serial cable
- 4 - Ethernet Straight-through cable

## Cisco 100-105 Exam

Answer: B

Question: 4

Refer to the exhibit.



The host in Kiev sends a request for an HTML document to the server in Minsk. What will be the source IP address of the packet as it leaves the Kiev router?

- A. 10.1.0.1
- B. 10.1.0.5
- C. 10.1.0.6
- D. 10.1.0.14
- E. 10.1.1.16
- F. 10.1.2.8

Answer: E

Question: 5

Which of the following are types of flow control? (Choose three.)

- A. buffering
- B. cut-through
- C. windowing

## Cisco 100-105 Exam

D. congestion avoidance

E. load balancing

Answer: A,C,D

Question: 6

Which layer of the OSI model controls the reliability of communications between network devices using flow control, sequencing and acknowledgments?

A. Physical

B. Data-link

C. Transport

D. Network

Answer: C

Question: 7

Which statements accurately describe CDP? (Choose three.)

A. CDP is an IEEE standard protocol.

B. CDP is a Cisco proprietary protocol.

C. CDP is a datalink layer protocol.

D. CDP is a network layer protocol.

E. CDP can discover directly connected neighboring Cisco devices.

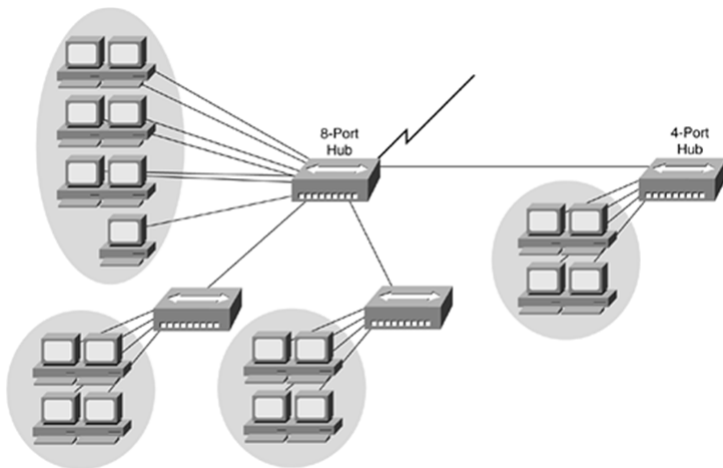
F. CDP can discover Cisco devices that are not directly connected.

Answer: B,C,E

Question: 8

Refer to the exhibit.

## Cisco 100-105 Exam



If the hubs in the graphic were replaced by switches, what would be virtually eliminated?

- A. broadcast domains
- B. repeater domains
- C. Ethernet collisions
- D. signal amplification
- E. Ethernet broadcasts

Answer: C

Question: 9

How does a switch differ from a hub?

- A. A switch does not induce any latency into the frame transfer time.
- B. A switch tracks MAC addresses of directly-connected devices.
- C. A switch operates at a lower, more efficient layer of the OSI model.
- D. A switch decreases the number of broadcast domains.
- E. A switch decreases the number of collision domains.

Answer: B

## Cisco 100-105 Exam

Question: 10

What must occur before a workstation can exchange HTTP packets with a web server?

- A. A UDP connection must be established between the workstation and its default gateway.
- B. A UDP connection must be established between the workstation and the web server.
- C. A TCP connection must be established between the workstation and its default gateway.
- D. A TCP connection must be established between the workstation and the web server.
- E. An ICMP connection must be established between the workstation and its default gateway.
- F. An ICMP connection must be established between the workstation and the web server.

Answer: D

Question: 11

Refer to the exhibit.

SwitchA# **show mac-address-table**

< non-essential output omitted >

Destination Address	Address Type	VLAN	Destination Port
00b0.d056.fe4d	Dynamic	1	FastEthernet0/3
00b0.d043.ac2e	Dynamic	1	FastEthernet0/4
00b0.d0fe.ac32	Dynamic	1	FastEthernet0/5
00b0.d0da.cb56	Dynamic	1	FastEthernet0/6

**Frame received by SwitchA:**

Source MAC	Destination MAC	Source IP	Destination IP
00b0.d056.fe4d	00b0.d0da.cb56	192.168.40.5	192.168.40.6

SwitchA receives the frame with the addressing shown. According to the command output also shown in the exhibit, how will SwitchA handle this frame?

- A. It will drop the frame.
- B. It will forward the frame out port Fa0/6 only.
- C. It will flood the frame out all ports.
- D. It will flood the frame out all ports except Fa0/3.

Answer: B

## Cisco 100-105 Exam

Question: 12

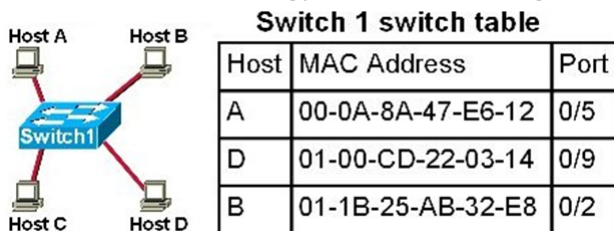
Which transport layer protocol provides best-effort delivery service with no acknowledgment receipt required?

- A. HTTP
- B. IP
- C. TCP
- D. Telnet
- E. UDP

Answer: E

Question: 13

Refer to the topology and switching table shown in the graphic.



Host B sends a frame to Host C. What will the switch do with the frame?

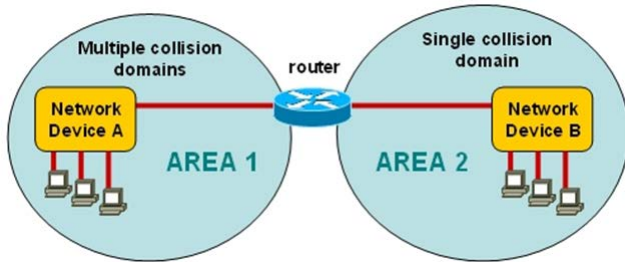
- A. Drop the frame
- B. Send the frame out all ports except port 0/2
- C. Return the frame to Host B
- D. Send an ARP request for Host C
- E. Send an ICMP Host Unreachable message to Host B
- F. Record the destination MAC address in the switching table and send the frame directly to Host C

Answer: B

## Cisco 100-105 Exam

Question: 14

Refer to the exhibit.



A network has been planned as shown. Which three statements accurately describe the areas and devices in the network plan? (Choose three.)

- A. Network Device A is a switch.
- B. Network Device B is a switch.
- C. Network Device A is a hub.
- D. Network Device B is a hub.
- E. Area 1 contains a Layer 2 device.
- F. Area 2 contains a Layer 2 device.

Answer: A,D,E

Question: 15

Which two statements describe the operation of the CSMA/CD access method? (Choose two.)

- A. In a CSMA/CD collision domain, multiple stations can successfully transmit data simultaneously.
- B. In a CSMA/CD collision domain, stations must wait until the media is not in use before transmitting.
- C. The use of hubs to enlarge the size of collision domains is one way to improve the operation of the CSMA/CD access method.
- D. After a collision, the station that detected the collision has first priority to resend the lost data.
- E. After a collision, all stations run a random backoff algorithm. When the backoff delay period



## Cisco 100-105 Exam

has expired, all stations have equal priority to transmit data.

F. After a collision, all stations involved run an identical backoff algorithm and then synchronize with each other prior to transmitting data.

Answer: B,E

Question: 16

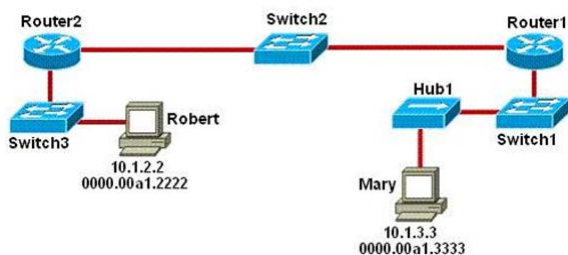
How does TCP differ from UDP? (Choose two.)

- A. TCP provides best effort delivery.
- B. TCP provides synchronized communication.
- C. TCP segments are essentially datagrams.
- D. TCP provides sequence numbering of packets.
- E. TCP uses broadcast delivery.

Answer: B,D

Question: 17

Refer to the exhibit.



As packets travel from Mary to Robert, which three devices will use the destination MAC address of the packet to determine a forwarding path? (Choose three.)

- A. Hub1
- B. Switch1
- C. Router1
- D. Switch2

## Cisco 100-105 Exam

E. Router2

F. Switch3

Answer: B,D,F

Question: 18 DRAG DROP

On the left are various network protocols. On the right are the layers of the TCP/IP model. Assuming a reliable connection is required, move the protocols on the left to the TCP/IP layers on the right to show the proper encapsulation for an email message sent by a host on a LAN. (Not all options are used.)

On the left are various network protocols. On the right are the layers of the TCP/IP model. Assuming a reliable connection is required, move the protocols on the left to the TCP/IP layers on the right to show the proper encapsulation for an email message sent by a host on a LAN. (Not all options are used.)

UDP	application layer
SNMP	transport layer
IP	internet layer
ARP	network access layer
Ethernet	
TCP	
SMTP	

Answer:

On the left are various network protocols. On the right are the layers of the TCP/IP model. Assuming a reliable connection is required, move the protocols on the left to the TCP/IP layers on the right to show the proper encapsulation for an email message sent by a host on a LAN. (Not all options are used.)

UDP	SMTP
SNMP	TCP
IP	IP
ARP	Ethernet
Ethernet	
TCP	
SMTP	

Question: 19

Refer to the exhibit.