

Oracle 1Z0-061 Exam

Volume: 75 Questions

Question No: 1

Evaluate the following SQL statement:

```
SQL> SELECT promo_id, promo_category
FROM promotions
WHERE promo_category = 'Internet' ORDER BY 2 DESC
UNION
SELECT promo_id, promo_category
FROM promotions
WHERE promo_category = 'TV'
UNION
SELECT promo_id, promo_category
FROM promotions
WHERE promo_category = 'Radio';
```

Which statement is true regarding the outcome of the above query?

- A. It executes successfully and displays rows in the descending order of PROMO_CATEGORY.
- B. It produces an error because positional notation cannot be used in the order by clause with set operators.
- C. It executes successfully but ignores the order by clause because it is not located at the end of the compound statement.
- D. It produces an error because the order by clause should appear only at the end of a compound query-that is, with the last select statement.

Answer: D

Question No: 2

View the Exhibit and examine the structure of the product, component, and PDT_COMP tables.

In product table, PDTNO is the primary key.

In component table, COMPNO is the primary key.

In PDT_COMP table, (PDTNO, COMPNO) is the primary key, PDTNO is the foreign key referencing PDTNO in product table and COMPNO is the foreign key referencing the COMPNO in component table.

You want to generate a report listing the product names and their corresponding component names, if the component names and product names exist.

Evaluate the following query:

```
SQL>SELECT pdtno, pdtname, compno, compname
FROM product _____ pdt_comp
USING (pdtno) _____ component USING (compno)
WHERE compname IS NOT NULL;
```

Oracle 1Z0-061 Exam

Which combination of joins used in the blanks in the above query gives the correct output?

PRODUCT		
Name	Null?	Type
PDTNO	NOT NULL	NUMBER(3)
PDTNAME		VARCHAR2(25)
QTY		NUMBER(6,2)

COMPONENT		
Name	Null?	Type
COMPNO	NOT NULL	NUMBER(4)
COMPNAME		VARCHAR2(25)
QTY		NUMBER(6,2)

PDT_COMP		
Name	Null?	Type
PDTNO	NOT NULL	NUMBER(2)
COMPNO	NOT NULL	NUMBER(3)

- A. JOIN; JOIN
- B. FULL OUTER JOIN; FULL OUTER JOIN
- C. RIGHT OUTER JOIN; LEFT OUTER JOIN
- D. LEFT OUTER JOIN; RIGHT OUTER JOIN

Answer: C

Question No: 3

View the Exhibit for the structure of the student and faculty tables.

STUDENT		
Name	Null?	Type
STUDENT_ID	NOT NULL	NUMBER(2)
STUDENT_NAME		VARCHAR2(20)
FACULTY_ID		VARCHAR2(2)
LOCATION_ID		NUMBER(2)

FACULTY		
Name	Null?	Type
FACULTY_ID	NOT NULL	NUMBER(2)
FACULTY_NAME		VARCHAR2(20)
LOCATION_ID		NUMBER(2)

You need to display the faculty name followed by the number of students handled by the faculty at the base location.

Oracle 1Z0-061 Exam

Examine the following two SQL statements:

Statement 1

```
SQL>SELECT faculty_name,COUNT(student_id)
      FROM student JOIN faculty
      USING (faculty_id, location_id)
      GROUP BY faculty_name;
```

Statement 2

```
SQL>SELECT faculty_name,COUNT(student_id)
      FROM student NATURAL JOIN faculty
      GROUP BY faculty_name;
```

Which statement is true regarding the outcome?

- A. Only statement 1 executes successfully and gives the required result.
- B. Only statement 2 executes successfully and gives the required result.
- C. Both statements 1 and 2 execute successfully and give different results.
- D. Both statements 1 and 2 execute successfully and give the same required result.

Answer: D

Question No: 4

View the Exhibits and examine products and sales tables.

Table PRODUCTS		
Name	Null?	Type
PROD_ID	NOT NULL	NUMBER(6)
PROD_NAME	NOT NULL	VARCHAR2(50)
PROD_DESC	NOT NULL	VARCHAR2(4000)
PROD_CATEGORY	NOT NULL	VARCHAR2(50)
PROD_CATEGORY_ID	NOT NULL	NUMBER
PROD_UNIT_OF_MEASURE		VARCHAR2(20)
SUPPLIER_ID	NOT NULL	NUMBER(6)
PROD_STATUS	NOT NULL	VARCHAR2(20)
PROD_LIST_PRICE	NOT NULL	NUMBER(8,2)
PROD_MIN_PRICE	NOT NULL	NUMBER(8,2)

Oracle 1Z0-061 Exam

Table SALES		
Name	Null?	Type
PROD_ID	NOT NULL	NUMBER
CUST_ID	NOT NULL	NUMBER
TIME_ID	NOT NULL	DATE
CHANNEL_ID	NOT NULL	NUMBER
PROMO_ID	NOT NULL	NUMBER
QUANTITY_SOLD	NOT NULL	NUMBER(10,2)

You issue the following query to display product name and the number of times the product has been sold:

```
SQL>SELECT p.prod_name, i.item_cnt
       FROM (SELECT prod_id, COUNT(*) item_cnt
            FROM sales
            GROUP BY prod_id) i RIGHT OUTER JOIN products p
       ON i.prod_id = p.prod_id;
```

What happens when the above statement is executed?

- A. The statement executes successfully and produces the required output.
- B. The statement produces an error because item_cnt cannot be displayed in the outer query.
- C. The statement produces an error because a subquery in the from clause and outer-joins cannot be used together.
- D. The statement produces an error because the group by clause cannot be used in a subquery in the from clause.

Answer: A

Question No: 5

You want to create a table employees in which the values of columns EMPLOYEES_ID and LOGIN_ID must be unique and not null. Which two SQL statements would create the required table?

Oracle 1Z0-061 Exam

- A) CREATE TABLE employees(
employee_id NUMBER,
login_id NUMBER,
employee_name VARCHAR2(25),
hire_date DATE,
CONSTRAINT emp_id_pk PRIMARY KEY (employee_id, login_id));
- B) CREATE TABLE employees(
employee_id NUMBER CONSTRAINT emp_id_pk PRIMARY KEY,
login_id NUMBER UNIQUE,
employee_name VARCHAR2(25),
hire_date DATE);
- C) CREATE TABLE employees(
employee_id NUMBER,
login_id NUMBER,
employee_name VARCHAR2(100),
hire_date DATE,
CONSTRAINT emp_id_uk UNIQUE (employee_id, login_id));
- D) CREATE TABLE employees(
employee_id NUMBER,
login_id NUMBER,
employee_name VARCHAR2(100),
hire_date DATE,
CONSTRAINT emp_id_uk UNIQUE (employee_id, login_id),
CONSTRAINT emp_id_nn NOT NULL (employee_id, login_id));
- D) CREATE TABLE employees(
employee_id NUMBER,
login_id NUMBER,
employee_name VARCHAR2(100),
hire_date DATE,
CONSTRAINT emp_id_uk UNIQUE (employee_id, login_id),
CONSTRAINT emp_id_nn NOT NULL (employee_id, login_id));
- E) CREATE TABLE employees(
employee_id NUMBER CONSTRAINT emp_id_nn NOT NULL,
login_id NUMBER CONSTRAINT login_id_nn NOT NULL,
employee_name VARCHAR2(100),
hire_date DATE,
CONSTRAINT emp_num_id_uk UNIQUE (employee_id, login_id));

- A. Option A
- B. Option B
- C. Option C
- D. Option D
- E. Option E
- F. Option F

Answer: D,E

Question No: 6

Oracle 1Z0-061 Exam

View the Exhibit and examine the structure of the products table.

Table PRODUCTS		
Name	Null?	Type
PROD_ID	NOT NULL	NUMBER(6)
PROD_NAME	NOT NULL	VARCHAR2(50)
PROD_DESC	NOT NULL	VARCHAR2(4000)
PROD_CATEGORY	NOT NULL	VARCHAR2(50)
PROD_CATEGORY_ID	NOT NULL	NUMBER
PROD_UNIT_OF_MEASURE		VARCHAR2(20)
SUPPLIER_ID	NOT NULL	NUMBER(6)
PROD_STATUS	NOT NULL	VARCHAR2(20)
PROD_LIST_PRICE	NOT NULL	NUMBER(8,2)
PROD_MIN_PRICE	NOT NULL	NUMBER(8,2)

Using the products table, you issue the following query to generate the names, current list price, and discounted list price for all those products whose list price falls below \$10 after a discount of 25% is applied on it.

```
SQL>SELECT prod_name, prod_list_price,  
           prod_list_price - (prod_list_price * .25) "DISCOUNTED_PRICE"  
FROM products  
WHERE discounted_price < 10;
```

The query generates an error. What is the reason for the error?

- A. The parenthesis should be added to enclose the entire expression.
- B. The double quotation marks should be removed from the column alias.
- C. The column alias should be replaced with the expression in the where clause.
- D. The column alias should be put in uppercase and enclosed within double quotation marks in the where clause.

Answer: C

Question No: 7

Examine the structure proposed for the transactions table: Which two statements are true regarding the creation and storage of data in the above table structure?

Oracle 1Z0-061 Exam

Name	Null?	Type
TRANS_ID	NOT NULL	NUMBER (6)
CUST_NAME	NOT NULL	VARCHAR2 (20)
CUST_STATUS	NOT NULL	CHAR
TRANS_DATE	NOT NULL	DATE
TRANS_VALIDITY		VARCHAR2
CUST_CREDIT_LIMIT		NUMBER

- A. The CUST_STATUS column would give an error.
- B. The TRANS_VALIDITY column would give an error.
- C. The CUST_STATUS column would store exactly one character.
- D. The CUST_CREDIT_LIMIT column would not be able to store decimal values.
- E. The TRANS_VALIDITY column would have a maximum size of one character.
- F. The TRANS_DATE column would be able to store day, month, century, year, hour, minutes, seconds, and fractions of seconds

Answer: B,C

Question No: 8

You need to create a table for a banking application. One of the columns in the table has the following requirements:

- 1) You want a column in the table to store the duration of the credit period.
- 2) The data in the column should be stored in a format such that it can be easily added and subtracted with date data type without using conversion functions.
- 3) The maximum period of the credit provision in the application is 30 days.
- 4) The interest has to be calculated for the number of days an individual has taken a credit for.

Which data type would you use for such a column in the table?

- A. DATE
- B. NUMBER
- C. TIMESTAMP
- D. INTERVAL DAY TO SECOND
- E. INTERVAL YEAR TO MONTH

Oracle 1Z0-061 Exam

Answer: D

Question No: 9

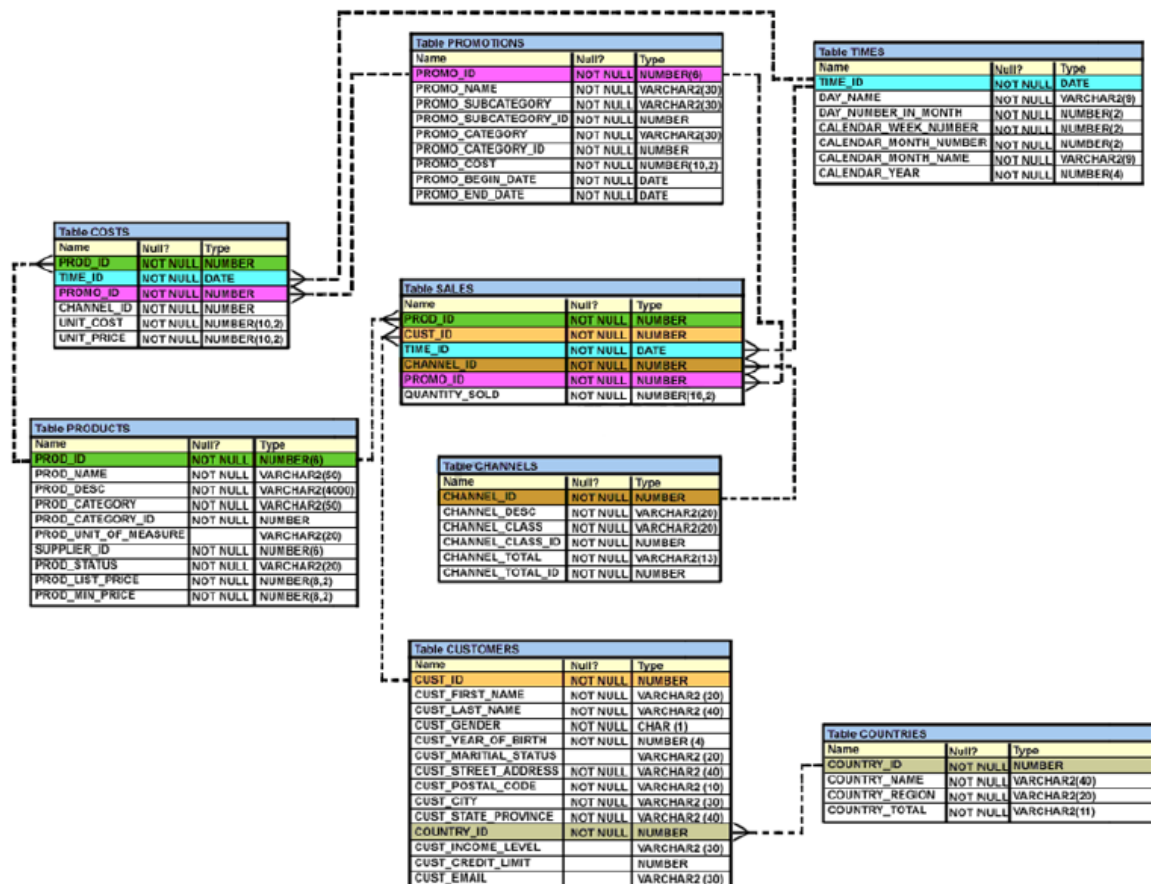
Which three tasks can be performed using SQL functions built into Oracle Database?

- A. Displaying a date in a nondefault format
- B. Finding the number of characters in an expression
- C. Substituting a character string in a text expression with a specified string
- D. Combining more than two columns or expressions into a single column in the output

Answer: A,B,C

Question No: 10

View the Exhibit and examine the description of SALES and PROMOTIONS tables.



You want to delete rows from the sales table, where the PROMO_NAME column in the promotions table has either blowout sale or everyday low prices as values.

Oracle 1Z0-061 Exam

Which three delete statements are valid?

- A) DELETE
FROM sales
WHERE promo_id = (SELECT promo_id
FROM promotions
WHERE promo_name = 'blowout sale')
AND promo_id = (SELECT promo_id
FROM promotions
WHERE promo_name = 'everyday low price');
- B) DELETE
FROM sales
WHERE promo_id = (SELECT promo_id
FROM promotions
WHERE promo_name = 'blowout sale')
OR promo_id = (SELECT promo_id
FROM promotions
WHERE promo_name = 'everyday low price');
- C) DELETE
FROM sales
WHERE promo_id IN (SELECT promo_id
FROM promotions
WHERE promo_name = 'blowout sale'
OR promo_name = 'everyday low price');
- D) DELETE
FROM sales
WHERE promo_id IN (SELECT promo_id
FROM promotions
WHERE promo_name IN ('blowout sale','everyday low price'));

A. Option A

B. Option B

C. Option C

D. Option D

Answer: B,C,D

Question No: 11

Which three SQL statements would display the value 1890.55 as \$1, 890.55?

Oracle 1Z0-061 Exam

- A) `SELECT TO_CHAR(1890.55, '$0G000D00')`
`FROM DUAL;`
- B) `SELECT TO_CHAR(1890.55, '$9,999V99')`
`FROM DUAL;`
- C) `SELECT TO_CHAR(1890.55, '$99,999D99')`
`FROM DUAL;`
- D) `SELECT TO_CHAR(1890.55, '$99G999D00')`
`FROM DUAL;`
- E) `SELECT TO_CHAR(1890.55, '$99G999D99')`
`FROM DUAL;`

- A. Option A
- B. Option B
- C. Option C
- D. Option D
- E. Option E

Answer: A,D,E

Question No: 12

You want to display 5 percent of the employees with the highest salaries in the EMPLOYEES table. Which query will generate the required result?