

Cisco 210-060 Exam

Volume: 203 Questions

Question: 1

An administrator wants to gauge the load and performance capacity of Cisco Unified Communication Manager devices, including conference bridges, gateways, and trunks. Which report would the administrator run?

- A. CAR
- B. CDR
- C. SIP
- D. RTMT
- E. CUBE

Answer: A

Question: 2

A user is assigned more than one directory number. Which option allows one voicemail box to serve both directory numbers?

- A. Alternate Extension
- B. Notification Devices
- C. Alternate Names
- D. Message Settings
- E. Caller Input
- F. Mailbox

Answer: A

Question: 3

Which Cisco Unified CME GUI menu option is used to navigate to the screen used to add or change a user name or password using the Cisco Unified CME GUI interface?

Cisco 210-060 Exam

- A. Administration > Update System Info
- B. Configure > System Parameters
- C. Configure > Phones
- D. Configure > Extensions

Answer: C

Question: 4

A user would like all calls to be forwarded to voice mail. The user's phone is not set up with a soft key for this feature. Which option accomplishes this configuration from within the Cisco Unified Communication Administrator Directory Number configuration page?

- A. Call Forward and Pickup Settings > Forward No Coverage External > Select voice mail check box
- B. Call Forward and Pickup Settings > Forward Busy External > Select voice mail check box
- C. Call Forward and Pickup Settings > Forward All > Select voice mail check box
- D. Call Forward and Pickup Settings > Forward Unregistered External > Select voice mail check box

Answer: C

Question: 5

Which type of data file is used for bulk import of users into Cisco Unity Connection?

- A. .xls
- B. .doc
- C. .csv
- D. .pdf

Answer: C

Cisco 210-060 Exam

Question: 6

An engineer is configuring a group of DNs and wants the external phone number mask to match the last four digits of the DN. Which option should be used?

- A. 123555xxxx
- B. 123555XXXX
- C. 123555****
- D. 123555....

Answer: B

Question: 7

An end user reports that conference calls are failing. Which fault domain should be investigated first?

- A. IP phone
- B. Cisco Unified Communications Manager Media Resources
- C. voice gateways
- D. network routers and switches

Answer: B

Question: 8

An engineer is adding four cordless analog phones to Cisco Unified Communications Manager. Which solution best meets this requirement?

- A. Cisco VG202 Analog Voice Gateway
- B. Cisco VG204 Analog Voice Gateway
- C. Cisco VG224 Analog Voice Gateway
- D. Cisco VG350 Analog Voice Gateway

Answer: B

Cisco 210-060 Exam

Question: 9

A user registered to Cisco Unified Communications Manager wants their cell phone to ring simultaneously with the IP phone. Which three configuration points must be configured to achieve this configuration? (Choose three.)

- A. Enable Mobile Voice Access.
- B. Create Remote Destination Profile.
- C. Create Remote Destination.
- D. Enable Single Number Reach.
- E. Create Application Dial Rule.
- F. Enable Call Forwarding.

Answer: B,C,D

Question: 10

A voice engineer wants to monitor system activities using the RTMT tool. Which step is next after navigating to Cisco Unified Reporting?

- A. system > scheduler > CDR
- B. system reports > unified CM data summary > generate report
- C. system > tools > reports
- D. tools > CDR analysis and reporting

Answer: B

Question: 11

A network engineer receives a report about poor quality on an active call between the IP phone of user A over the WAN to the IP phone of user B. Using web access to the phone, the network engineer remotely checks call statistics such as jitter, network delay, and packet loss. Calculated packet loss is 3%, average jitter is 20 ms, network delay is 1 ms, and conceal seconds is 7.

What is the most likely problem with this call?

Cisco 210-060 Exam

- A. Calculated packet loss is too high.
- B. Average jitter is too high.
- C. Network delay is too high.
- D. Conceal seconds are too high.

Answer: A

Question: 12

Which two technologies comprise a Cisco Presence deployment? (Choose two.)

- A. Cisco Unified Presence Server
- B. Cisco Unity Connection
- C. Cisco Unified Communications Manager
- D. Active Directory
- E. Cisco Unified Border Element
- F. Cisco Expressway

Answer: A,C

Question: 13

Which IM and Presence chat feature allows for an always-available chat room that remains active, even if all of the participants leave the chat?

- A. Personal
- B. Group
- C. Persistent
- D. Ad-hoc

Answer: C

Cisco 210-060 Exam

Question: 14

Users report volume issues with recordings in Cisco Unity Connection. Which feature can be disabled to prohibit automatic volume adjustments to recordings?

- A. AGC
- B. Noise Reduction
- C. Audio Normalization
- D. VAD

Answer: A

Question: 15

An engineer is using Cisco Jabber. Instant messages are transported through which protocol?

- A. SIP
- B. XMPP
- C. H.323
- D. SCCP

Answer: B

Question: 16

Which two layers are Cisco Unified Communications component layers? (Choose two.)

- A. Infrastructure layer
- B. Data link layer
- C. Network layer
- D. Endpoints layer
- E. Transport layer

Answer: A,D

Cisco 210-060 Exam

Question: 17

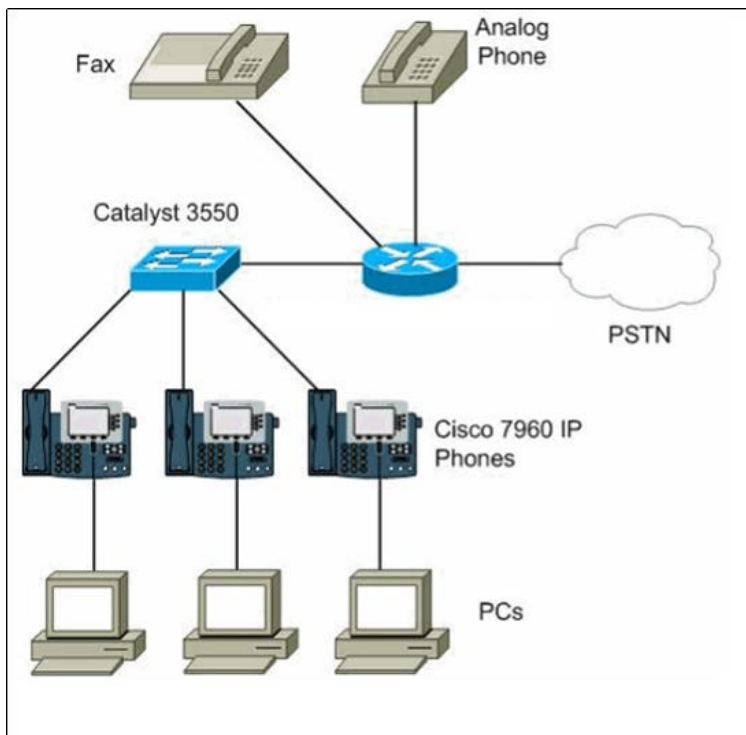
Which two protocols does Jabber use to achieve Presence status? (Choose two.)

- A. SIP/SIMPLE
- B. XMPP
- C. SCCP
- D. MGCP
- E. SOAP

Answer: A,B

Question: 18

Refer to the exhibit.



Which Cisco Unified Communications platform is being utilized?

- A. Cisco Unified Communications Manager Express
- B. Cisco Unified Presence
- C. Cisco Unity Connection

Cisco 210-060 Exam

D. Cisco Unified Communications Manager

Answer: A

Question: 19

Which three choices are required for the boot process for a Cisco IP phone? (Choose three.)

A. TFTP services

B. DHCP services

C. Voice VLAN

D. Routing protocol

E. TCP/IP

F. PortFast

Answer: A,B,C

Question: 20

A technician is checking services in response to the recent failed delivery of all voicemails. Which service must be running for message delivery to function properly?

A. Connection DB Event Publisher

B. Connection Database Proxy

C. Connection Notifier

D. Connection Message Transfer Agent

Answer: D

Question: 21

How fast can Cisco Unified Communications Manager generate CDR and CMR files?

A. One CDR file and one CMR file every second for up to 1 minute

Cisco 210-060 Exam

- B. One CDR file and one CMR file every minute for up to 1 hour
- C. Ten CDR files and ten CMR files every hour for up to 1 day
- D. Ten CDR files and ten CMR files every day for up to 1 week

Answer: C

Question: 22

Which three rules are valid transfer rules in Cisco Unity Connection? (Choose Three)

- A. Standard
- B. alternate
- C. closed
- D. holiday
- E. nonstandard

Answer: A,B,C

Question: 23

For which three reasons would a voice engineer create a separate user template in Cisco Unity Connection? (Choose three.)

- A. Certain users changed their extensions.
- B. Certain users are in a different partition.
- C. Certain users are using a different call handler.
- D. Certain users are using a different phone system.
- E. Certain users are being added to Cisco Unified Presence Server.
- F. Certain users are being moved to a different branch office.

Answer: B,C,D

Cisco 210-060 Exam

Question: 24

A systems administrator wants to integrate a new Cisco Unity Connection cluster with an existing directory in the enterprise. What is one valid user import source?

- A. Cisco Unified Communications Manager AXL server
- B. Cisco Unified Communications Manager CTI server
- C. Cisco Unified Communications Manager TFTP server
- D. Cisco Unified Communications Manager MOH server

Answer: A

Question: 25

An engineer is adding MCU 4500 to Cisco Unified Communications Manager. Which two configuration areas within Cisco Unified Communications Manager allow the engineer to perform this task? (Choose two.)

- A. TFTP services
- B. SIP endpoint
- C. media bridge
- D. SCCp endpoint

Answer: B,C

Question: 26

User A needs to have a line shared on the user B phone. Both phones register with Cisco Unified Communications Manager. Which method can be used from Cisco Unified Communications Manager Administration web pages to configure a shared line on the user B phone?

- A. Navigate to the user B phone > Add the user A DN.
- B. Navigate to the user B phone > Shared Line > Add the user A DN.
- C. Navigate to DN configuration > Shared Line > Add the user A DN.
- D. Navigate to end user configuration > Shared Line > Add the user A DN.