



Implementing Cisco Application Centric Infrastructure - Advanced (DCACIA)



EXAMKILLER

Help Pass Your Exam At First Try

Cisco

Exam 300-630

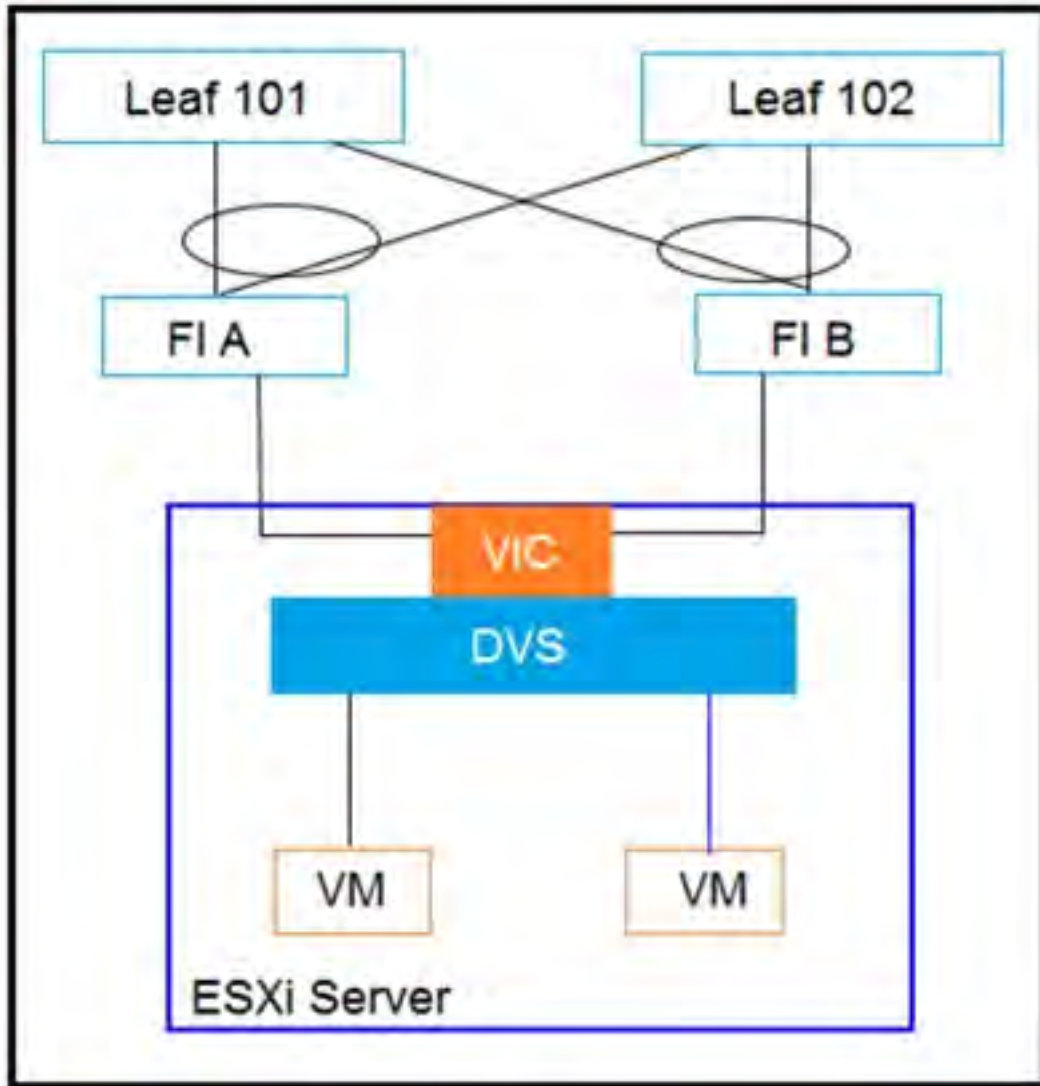
Implementing Cisco Application Centric Infrastructure - Advanced (DCACIA)

Version: 4.0

[Total Questions: 76]

Question No : 1

Refer to the exhibit.



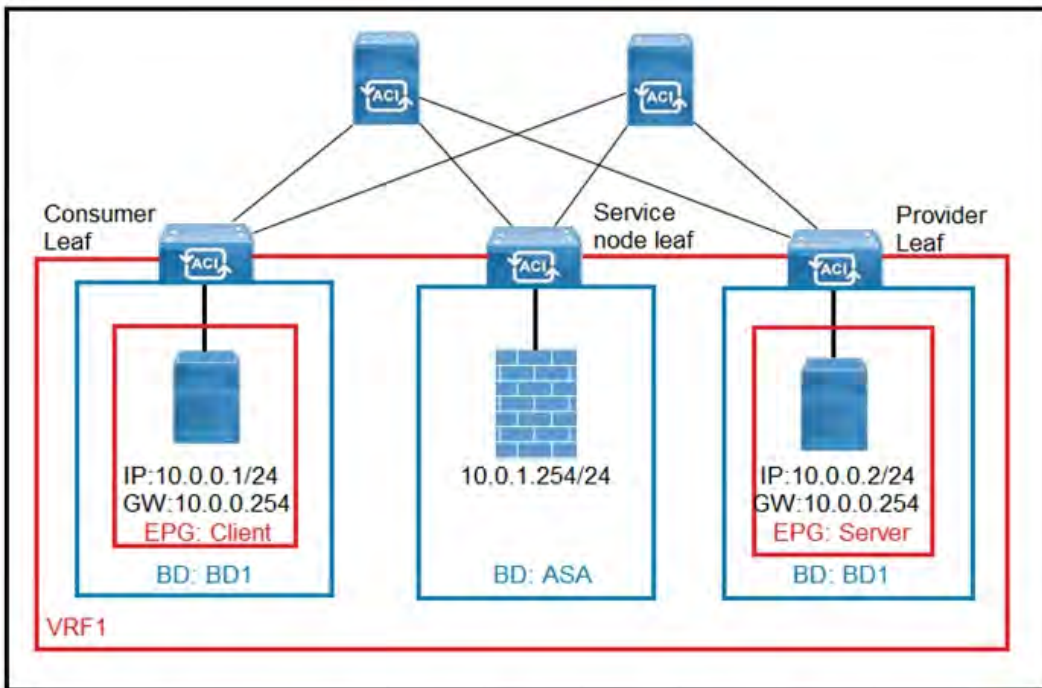
Between Cisco UCS FIs and Cisco ACI leaf switches, CDP is disabled, the LLDP is enabled, and LACP is in Active mode. Which two discovery protocols and load-balancing mechanism combinations can be implemented for the DVS? (Choose two.)

- A. CDP enabled, LLDP disabled, and LACP Active
- B. CDP disabled, LLDP enabled, and MAC Pinning
- C. CDP enabled, LLDP disabled, and MAC Pinning
- D. CDP enabled, LLDP enabled, and LACP Active
- E. CDP enabled, LLDP disabled, and LACP Passive
- F. CDP disabled, LLDP enabled, and LACP Passive

Answer: B,E

Question No : 2

Refer to the exhibit.



What must be configured in the service graph to redirect HTTP traffic between the EPG client and EPG server to go through the Cisco ASA firewall?

- A. contract filter to allow ARP and HTTP
- B. precise filter to allow only HTTP traffic
- C. contract with no filter
- D. permit-all contract filter

Answer: A

Question No : 3

An engineer configures a new Cisco ACI Multi-Pod and must set up the link between the spine and the IPN device. Which three actions should be taken to accomplish this goal?

(Choose three.)

- A. Enable MP-BGP routing
- B. Enable BIDIR-PIM protocol
- C. Enable PIM-SM protocol
- D. Enable OSPF routing
- E. Enable IS-IS routing
- F. Enable DHCP relay

Answer: A,B,F

Question No : 4

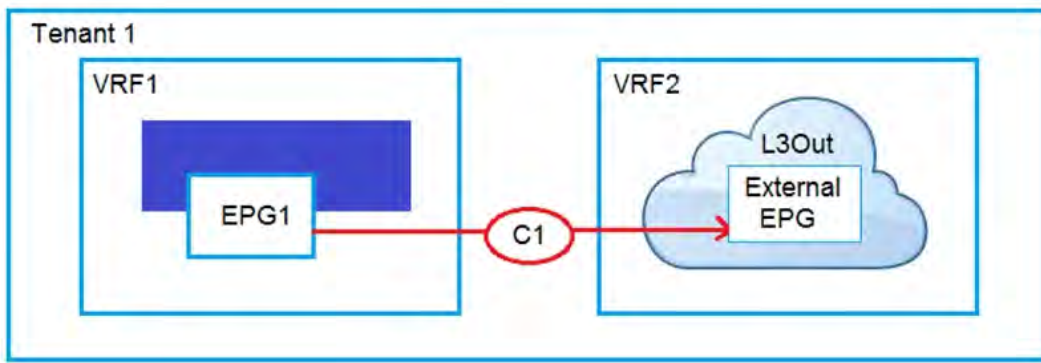
What are two characteristics of Cisco ACI interaction with MSTP? (Choose two.)

- A. A Cisco ACI leaf flushes all local endpoints in the received EPG when an MSTP TCN frame is received.
- B. A static path binding is required for native VLAN to carry the MST BPDUs in existing EPGs.
- C. Mis-cabling protocol is used to snoop the MSTP TCN packets.
- D. A dedicated EPG must be created for the native VLAN ID with static bindings toward the MSTP-enabled switches.
- E. The PVST simulation must be configured on external network switches to support MSTP.

Answer: C,D

Question No : 5

Refer to the exhibit.



An engineer must have communication between EPG1 in VRF1 and External EPG in VRF2. Which three actions should be taken for the defined subnets in the L3Out External EPG to accomplish this goal? (Choose three.)

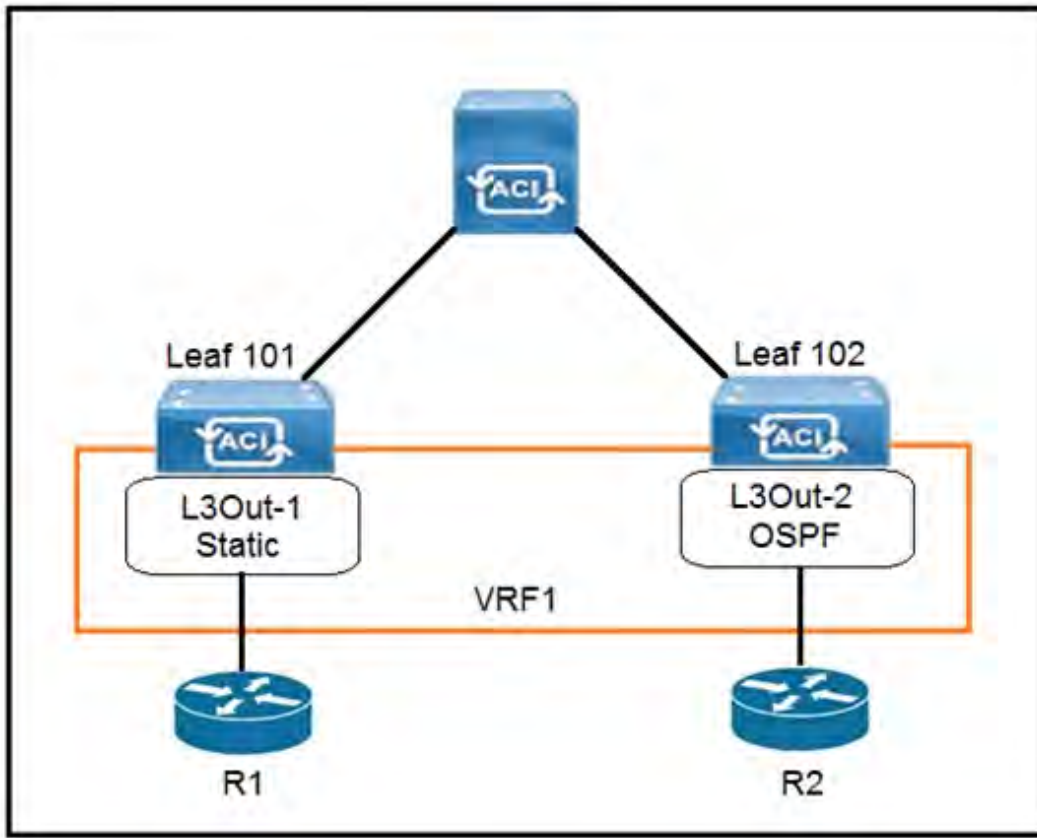
- A. Enable Shared Route Control Subnet
- B. Enable External Subnets for External EPG
- C. Enable Export Route Control Subnet
- D. Enable Shared Security Import Subnet
- E. Enable Aggregate Shared Routes
- F. Enable Import Route Control Subnet

Answer: C,D,F

Reference: <https://www.cisco.com/c/en/us/solutions/collateral/data-center-virtualization/application-centric-infrastructure/guide-c07-743150.html>

Question No : 6

Refer to the exhibit.



The 0.0.0.0/0 is configured as a default static route on L3Out-1. Which action should be taken for the 0.0.0.0/0 prefix to advertise out on L3Out-2 OSPF?

- A. Enable Shared Security Import Subnet
- B. Enable Aggregate Export Subnet
- C. Enable Shared Route Control Subnet
- D. Enable Export Route Control Subnet

Answer: B

Question No : 7

How is broadcast forwarded in Cisco ACI Multi-Pod after ARP flooding is enabled?

- A. For the specific bridge domain, all spines forward the broadcast frames to IPN routers
- B. Broadcast frames are forwarded inside the pod and across the IPN using the multicast address that is associated to the bridge domain
- C. Within a pod, the ingress leaf switch floods the broadcast frame on all fabric ports
- D. Ingress replication is used on the spines to forward broadcast frames in the IPN infrastructure

Answer: A

Question No : 8

How is multicast traffic managed in a Cisco ACI fabric?

- A. FTag trees are rooted at the spine nodes. Cisco APIC determines the roots.
- B. FTag trees are rooted at the leaf nodes. Cisco APIC determines the roots.
- C. FTag trees are rooted at the leaf nodes. The roots must be configured manually.
- D. FTag trees are rooted at the spine nodes. The roots must be configured manually.

Answer: A

Reference: <https://www.ciscolive.com/c/dam/r/ciscolive/emea/docs/2015/pdf/BRKAPP-9004.pdf>

Question No : 9 DRAG DROP

An engineer must migrate servers from a legacy data center infrastructure to a Cisco ACI fabric. Drag and drop the steps from the left into the order that they must be completed on the right to ensure the least amount of downtime.

Answer Area

Extend Layer 2 connectivity from the legacy infrastructure to Cisco ACI. Move servers from the legacy infrastructure to Cisco ACI leaf switches	Step 1
Shut SVI on the legacy infrastructure and enable bridge domain unicast routing on Cisco ACI	Step 2
Decommission the legacy infrastructure	Step 3
Configure Cisco ACI: Define access policies, tenants, and bridge domain with unicast routing disabled. Map each VLAN to an EPG.	Step 4

Answer:**Answer Area**

Extend Layer 2 connectivity from the legacy infrastructure to Cisco ACI. Move servers from the legacy infrastructure to Cisco ACI leaf switches	Shut SVI on the legacy infrastructure and enable bridge domain unicast routing on Cisco ACI
Shut SVI on the legacy infrastructure and enable bridge domain unicast routing on Cisco ACI	Configure Cisco ACI: Define access policies, tenants, and bridge domain with unicast routing disabled. Map each VLAN to an EPG.
Decommission the legacy infrastructure	Extend Layer 2 connectivity from the legacy infrastructure to Cisco ACI. Move servers from the legacy infrastructure to Cisco ACI leaf switches
Configure Cisco ACI: Define access policies, tenants, and bridge domain with unicast routing disabled. Map each VLAN to an EPG.	Decommission the legacy infrastructure

Which feature should be disabled on a bridge domain when a default gateway for endpoints is on an external device instead of a Cisco ACI bridge domain SVI?

- A. unicast routing
- B. ARP flooding
- C. unknown unicast flooding
- D. proxy ARP

Answer: C

Question No : 11

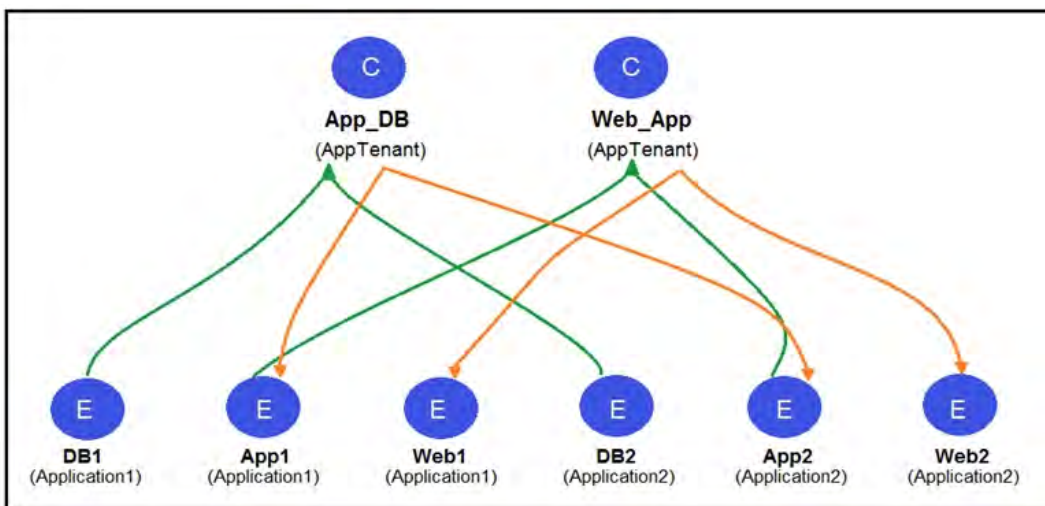
A cloud provider must make a pair of firewalls available to all tenants. Each tenant defines its own service graph. Where should the Layer 4 to Layer 7 service be configured to accomplish this goal?

- A. management tenant
- B. infrastructure tenant
- C. user tenant
- D. common tenant

Answer: C

Question No : 12

Refer to the exhibit.



Two application profiles are configured in the same tenant and different VRFs. Which contract scope is configured to allow communication between the two application profiles?

- A. global
- B. VRF
- C. application
- D. tenant

Answer: D

Reference: https://www.cisco.com/c/en/us/td/docs/switches/datacenter/aci/apic/sw/1-x/Operating_ACI/guide/b_Cisco_Operating_ACI/b_Cisco_Operating_ACI_chapter_01000.html

Question No : 13

What are two characteristics of Cisco ACI and Spanning Tree Protocol interaction? (Choose two.)

- A. When a TCN BPDU is received in a VLAN, Cisco ACI flushes the endpoints for the associated encapsulation.
- B. STP BPDUs are dropped due to MCP.
- C. MST BPDUs are flooded correctly in Cisco ACI fabric without additional configuration.
- D. BPDU filter and BPDU guard can be configured on Cisco ACI leaf edge ports.
- E. Cisco ACI must be configured as the STP root for all VLANs.

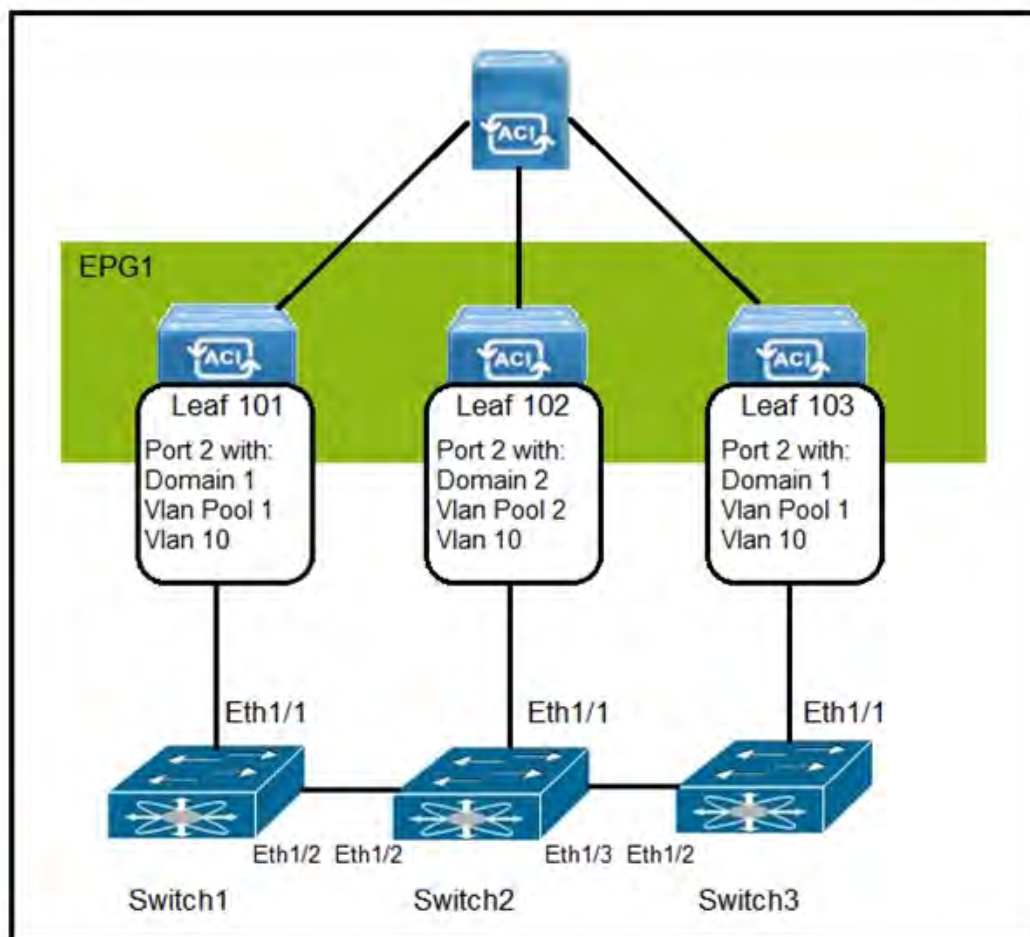
Answer: D,E

Reference:

https://www.cisco.com/c/en/us/td/docs/switches/datacenter/aci/aci_virtual_edge/configuration/1-x/b_Virtual_Edge_Config_Guide_1_2_2/b_Virtual_Edge_Config_Guide_1_2_2_chapter_0101.html

Question No : 14

Refer to the exhibit.



How are the STP BPDUs forwarded over Cisco ACI fabric?

- A. STP BPDUs that are generated by Switch2 are received by Switch1 and Switch3.
- B. Cisco ACI fabric drops all STP BPDUs that are generated by the external switches.
- C. Cisco ACI acts as the STP root for all three external switches.
- D. STP BPDUs that are generated by Switch1 are received only by Switch3.

Answer: A

Reference: <https://www.linkedin.com/pulse/cisco-aci-network-behaviour-stptcn-how-identify-loop-anvit-kulshresta>

Question No : 15

An engineer creates the objects that must be deployed at each site in Cisco ACI Multi-Site Orchestrator. Which action should be taken before the schema can be associated with the newly configured site?

- A. Attach the templates to the newly configured site
- B. Configure a provider for the Cisco ACI Multi-Site Orchestrator
- C. Import existing policies from an existing tenant to Cisco ACI Multi-Site Orchestrator
- D. Configure the Infra Site-Specific Settings

Answer: A

Question No : 16

Which two components must be configured as stretched to establish intra-VRF communication between two EPGs that are deployed in different sites and different bridge domains? (Choose two.)

- A. contract
- B. tenant
- C. application profile
- D. bridge domain
- E. EPG

Answer: D,E

Reference: <https://www.cisco.com/c/en/us/solutions/collateral/data-center-virtualization/application-centric-infrastructure/white-paper-c11-739609.html>

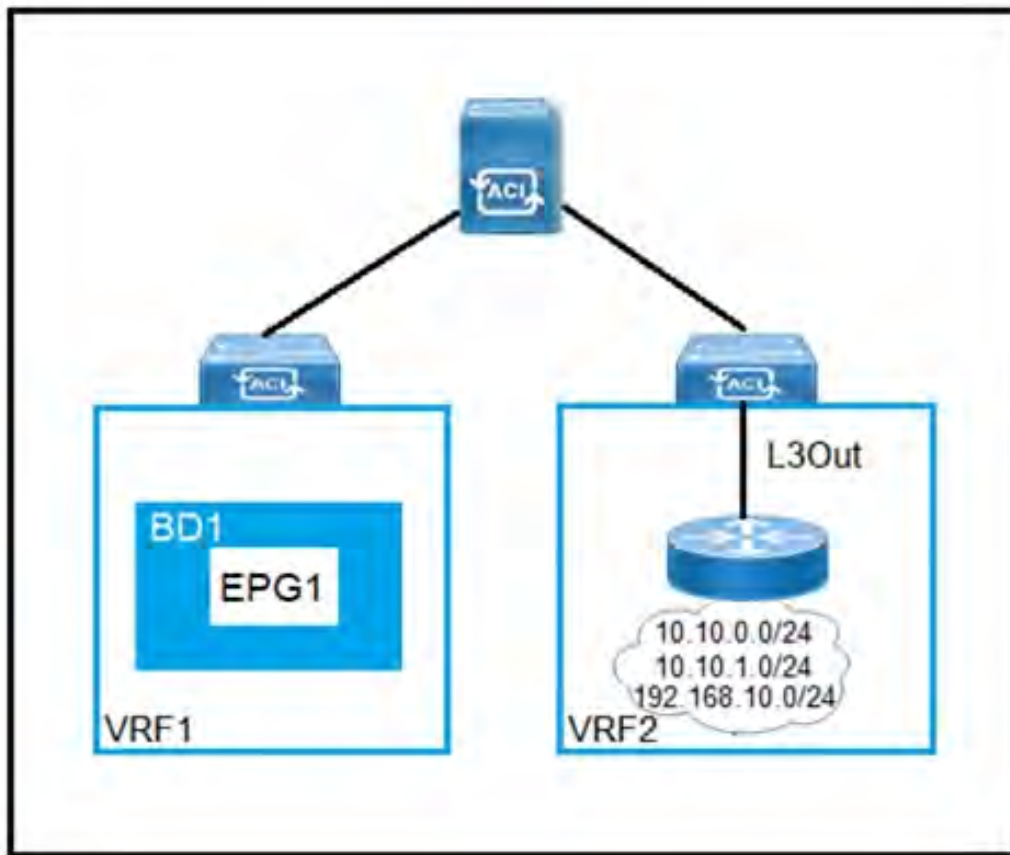
Question No : 17

In a Cisco ACI Multi-Site fabric, the Inter-Site BUM Traffic Allow option is enabled in a specific stretched bridge domain. What is used to forward BUM traffic to all endpoints in the same broadcast domain?

- A. ingress replication on the spines in the source site
- B. egress replication on the source leaf switches
- C. egress replication on the destination leaf switches
- D. ingress replication on the spines in the destination site

Answer: D

Reference: <http://yves-louis.com/DCI/?p=1277>

Question No : 18 DRAG DROP

Refer to the exhibit. Drag and drop the subnets and flags from the left into the External Network Instance Profile policies on the right to create a setup that advertises only 10.10.0.0/24 and 10.10.1.0/24 prefixes in VRF1 and establishes connectivity between VRFs. Not all options are used.

Answer Area

10.10.0.0/16	IP Address <div>IP Address</div>
10.10.0.0/23	
0.0.0.0/0	Scope <div>Scope 1</div> <div>Scope 2</div> <div>Scope 3</div>
External Subnets for the External EPG	
Export Route Control Subnet	
Shared Route Control Subnet	Aggregate <div>Aggregate</div>
Import Route Control Subnet	
Shared Security Import Subnet	
Aggregate Export	
Aggregate Import	
Aggregate Shared	

Answer: