



Implementing Cisco Collaboration Cloud and Edge Solutions (CLCEI)



EXAMKILLER

Help Pass Your Exam At First Try

Cisco

Exam 300-820

Implementing Cisco Collaboration Cloud and Edge Solutions (300-820 CLCEI)

Version: 7.0

[Total Questions: 96]

Question No : 1

In a Mobile and Remote Access deployment, where must communications be encrypted with TLS?

- A. Cisco Expressway-E and endpoints outside the enterprise
- B. Cisco Expressway-C, Cisco Unified Communications Manager, and IM&P
- C. Cisco Expressway-C, Cisco Expressway-E, and Cisco Unified Communications Manager
- D. Cisco Expressway-C, Cisco Expressway-E, and endpoints outside the enterprise

Answer: A

Question No : 2

Which media encryption mode can be configured on an Expressway zone?

- A. Advanced Encryption Standard
- B. IPsec
- C. Triple Data Encryption Standard
- D. force unencrypted

Answer: D

Question No : 3

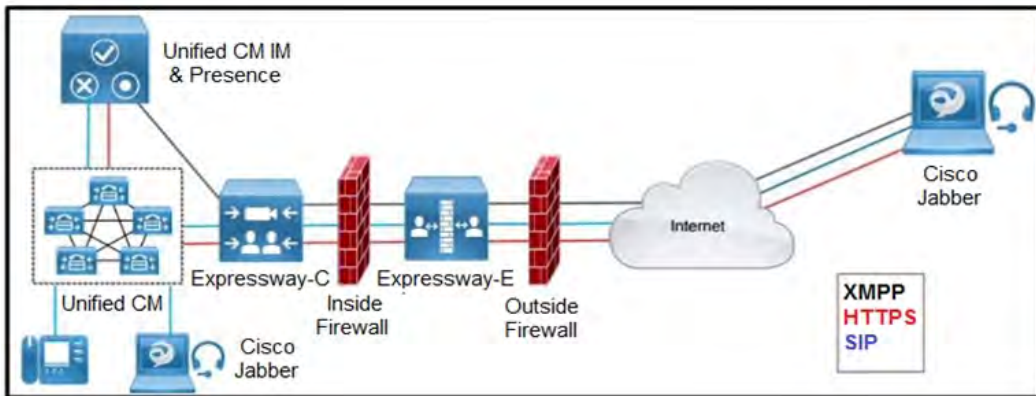
An organization has a domain name of example.com. Which two SRV records are valid for a SIP and H 323 communication? (Choose two)

- A. _collab-edge._tls.example.com
- B. _sips_tcp.example.com
- C. _h323ls_tcp.example.com
- D. _h323ls._udp.example.com
- E. _sips._udp.example.com

Answer: B,D

Question No : 4

Refer to the exhibit.



Which two outbound connections should an administrator configure on the internal firewall?
(Choose two.)

- A. XMPP: TCP 7400
- B. SIP: TCP 7001
- C. SIP TCP 5061
- D. Media: UDP 36012 to 59999
- E. HTTPS: TCP 8443

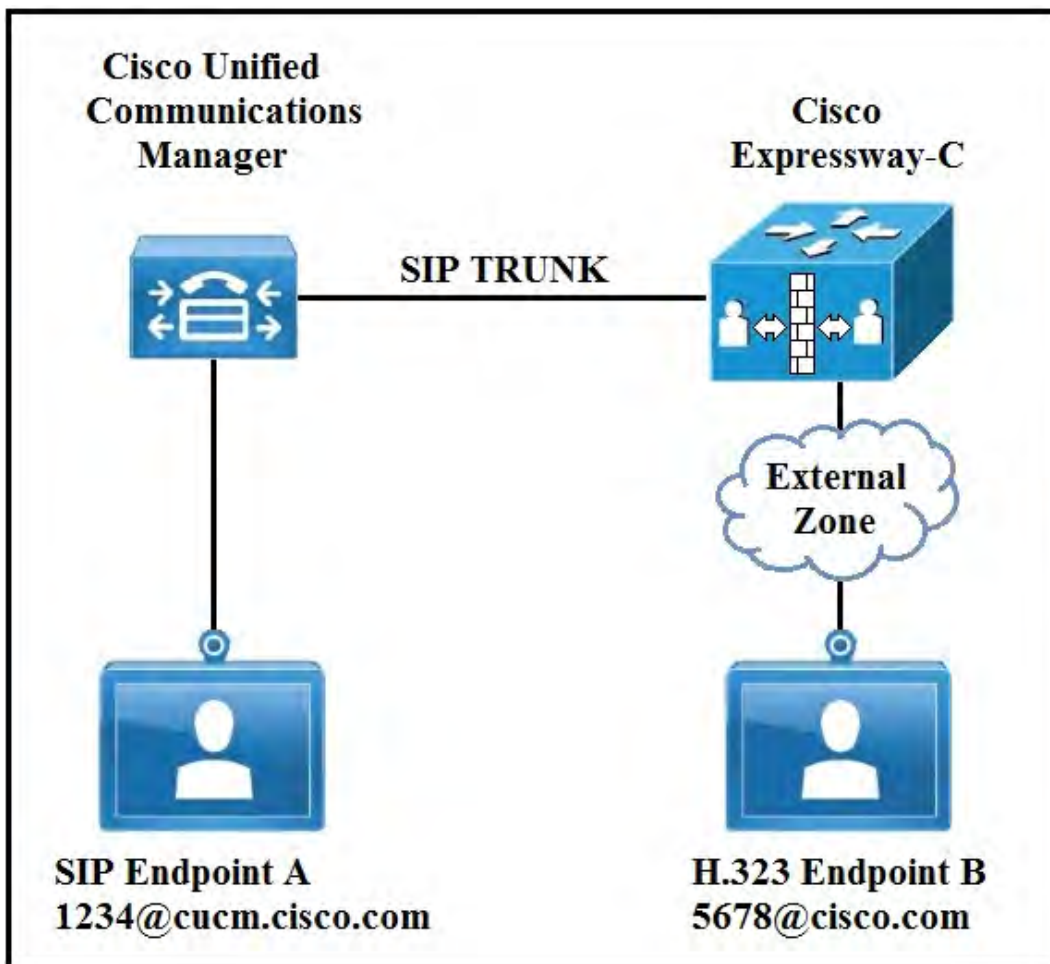
Answer: A,B

Reference:

https://www.cisco.com/c/dam/en/us/td/docs/voice_ip_comm/expressway/config_guide/X12-5/Cisco-Expressway-IP-Port-Usage-for-Firewall-Traversal-Deployment-Guide-X12-5.pdf

Question No : 5

Refer to the exhibit.



In an environment SIP devices are registered to CUCM and H.323 devices to VCS. What would be required to enable these calls to setup correctly?

- A. Create a presearch transform.
- B. Change the domain of SIP endpoint A to cisco.com.
- C. Disable SIP in the external zone.
- D. Change the interworking mode to On.

Answer: D

Question No : 6

Which DNS record and port combination must be resolved externally for Mobile and Remote Access to be used?

- A. _collab-edge on port 8443
- B. _cisco-uds-edge on port 5061
- C. _collab-edge on port 5061

D. _cisco-uds on port 8443

Answer: A

Question No : 7

A MRA deployment is being configured where one of the requirements is for registered Jabber users to pull directory photos from an internal server. What should be configured on the Expressway-C so that MRA registered clients reach this server?

- A. A search rule must be created to route the requests to Cisco UCM.
- B. The directory photo server must be added to the HTTP allow list.
- C. A neighbor zone must be created to the directory photo server.
- D. The directory photo server FQDN must be added to the Expressway-C certificate.

Answer: B

Reference: <https://www.cisco.com/c/en/us/support/docs/unified-communications/expressway/118798-technote-cucm-00.html#anc29>

Question No : 8

Which SIP media encryption mode is applied by default for newly created zones in the Cisco Expressway?

- A. Off
- B. Auto
- C. Force Encrypted
- D. Best Effort

Answer: B

Question No : 9

What are two reasons why port 8443 is unreachable from the Internet to the Expressway-E? (Choose two.)

- A. The MRA license is missing on the Expressway-E.
- B. The Unified Communications zone is down.
- C. Transform is not configured on Expressway-E.
- D. The SRV record for _cisco-uds is misconfigured.
- E. The firewall is blocking the port.

Answer: B,E

Question No : 10

Which configuration is required when implementing Mobile and Remote Access on Cisco Expressway?

- A. IPS
- B. SAML authentication
- C. Cisco Unified CM publisher address
- D. SSO

Answer: C

Question No : 11

Which describes what could be done on the Expressway-E to successfully route calls from Expressway-C on the internal network to the Internet?

- A. Application layer gateway could be enabled to bridge the media traffic.
- B. A static NAT route could be added to the firewall to bridge the two networks.
- C. The Expressway-E could be enabled for Dual-NIC capability.
- D. The Expressway-E could be enabled for interworking.

Answer: C

Question No : 12

How does an administrator configure an Expressway to make sure an external caller cannot reach a specific internal address?

- A. add the specific URI in the firewall section of the Expressway and block it

- B. block the call with a call policy rule in the Expressway-E
- C. add a search rule route all calls to the Cisco UCM
- D. configure FAC for the destination alias on the Expressway

Answer: B

Question No : 13

What is the purpose of a transform in the Expressway server?

- A. A transform has the function as a neighbor zone in the Expressway. It creates a connection with another server.
- B. A transform changes the audio codec when the call goes through the Expressway.
- C. A transform is used to route calls to a destination.
- D. A transform changes an alias that matches certain criteria into another alias.

Answer: D

Question No : 14

An engineer wants to configure a zone on the Expressway-E to receive communications from the Expressway-C in order to allow inbound and outbound calls. How is the peer address configured on the Expressway-C when Expressway-E has only one NIC enabled and is using static NAT mode?

- A. Expressway-E FQDN
- B. Cisco UCM FQDN
- C. Expressway-E DHCP
- D. Cisco UCM DHCP

Answer: A

Reference:

https://www.cisco.com/c/dam/en/us/td/docs/voice_ip_comm/expressway/config_guide/X8-11/Cisco-Expressway-Basic-Configuration-Deployment-Guide-X8-11-4.pdf

Question No : 15

A call is sent by Cisco UCM to Expressway with a URI of 75080001@expc1a.pod8.test.lab. If (7508...)

@expc1a.pod8.test.lab.* is the pattern string, what would be the replacement string of the transform in Expressway to re-write the call so that it becomes 75080001@conf.pod8.test.lab?

- A. \1@conf.pod8.test.lab.@
- B. \1@conf.pod8.test\lab.*
- C. \1@conf.pod8.test\lab
- D. \1@conf.pod8.test.lab.!

Answer: C

Question No : 16

An administrator has been tasked to bulk entitle 200 existing users and ensure all future users are

automatically configured for the Webex Hybrid Calendar Service. Which two options should be used to configure these users? (Choose two.)

- A. Export a CSV list of users in the Cisco Webex Control Hub, set the Hybrid Calendar Service to TRUE for users to be enabled, then import the file back to Manage Users menu in the Cisco Webex Control Hub.
- B. Set up an Auto-Assign template that enables Hybrid Calendar.
- C. Select the Hybrid Services settings card in the Cisco Webex Control Hub and import a User Status report that contains only users to be enabled.
- D. On the Users tab in the Cisco Webex Control Hub, check the box next to each user who should be enabled, then click the toggle for the Hybrid Calendar service to turn it on.
- E. From Cisco Webex Control Hub, verify the domain that your Hybrid Calendar users will use, which automatically activates them for the service.

Answer: A,E

Question No : 17

What is one of the user-related prerequisites for Jabber Team Messaging Mode Installation?

- A. Create user accounts in Cisco Webex Control Hub only.
- B. Create user accounts in Cisco Unified Communications Manager only.
- C. Create user accounts in Cisco Unified IM and Presence.
- D. Create user accounts in Cisco Unified CM and Cisco Webex Control Hub.

Answer: D

Question No : 18

An Expressway-E is configured using a single NIC with NAT.

How must the Expressway-C traversal client zone be configured to connect to the Expressway-E?

- A. TLS verify must be enabled.
- B. The zone profile must be set to default.
- C. The peer address must be the Expressway-E NAT address.
- D. The peer address must be the Expressway-E LAN 1 IP address.

Answer: C

Question No : 19

Which two considerations must be made when using Expressway media traversal?
(Choose two.)

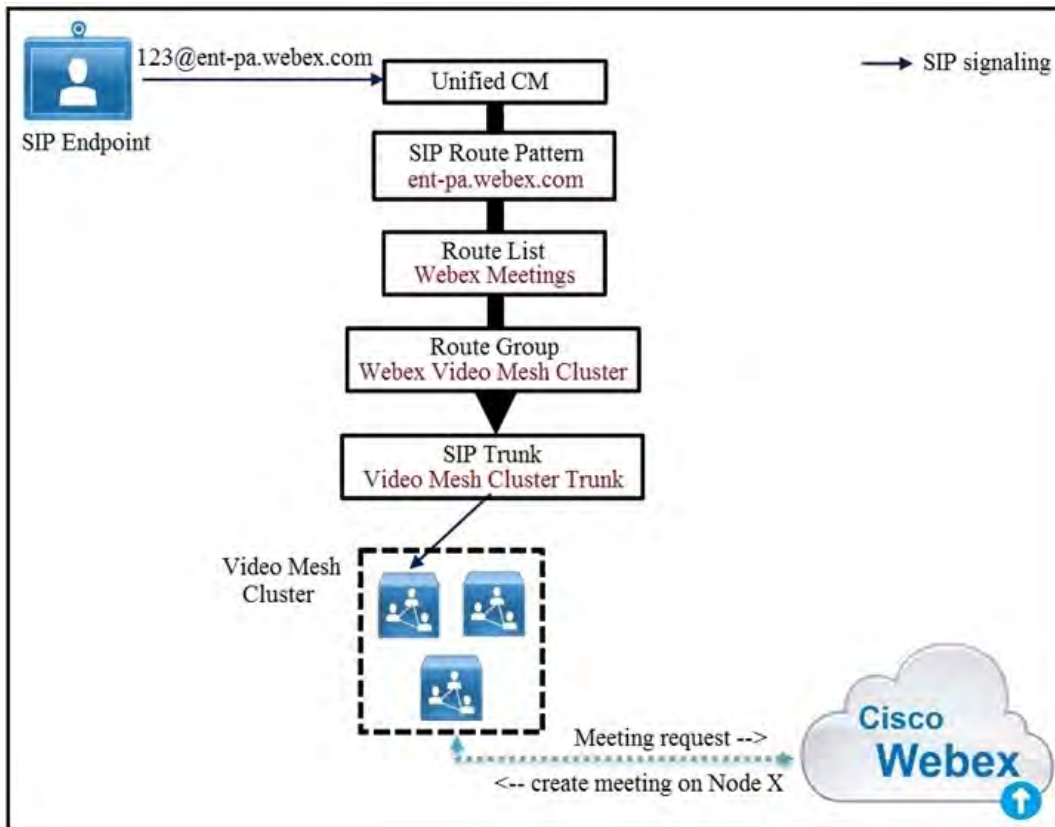
- A. It is possible to NAT both Expressway-E interfaces
- B. The Unified Communications traversal zone should be used for MRA
- C. The Expressway-E must be put in a firewall DMZ segment
- D. Expressway Control is the traversal server installed in the DMZ
- E. Cisco UCM zone should be either traversal server or client

Answer: B,C

Reference: <https://www.ciscolive.com/c/dam/r/ciscolive/apjc/docs/2018/pdf/BRKUCC-2801.pdf>

Question No : 20

Refer to the exhibit.



Cisco Unified Communications Manager routes the call via the Webex Meetings route list and route group to the Video Mesh cluster Node#1 in the Video Mesh cluster is hosting the meeting and has reached full capacity, but other nodes in the cluster still have spare capacity.

What happens to the participant's call?

- A. Another node in the cluster is used and an intra-cluster cascade between the two Video Mesh nodes is formed.
- B. The call is queued.
- C. The call fails.
- D. Another node in the cluster is used and an intra-cluster cascade between Webex and the new Video Mesh node is formed.

Answer: A

Question No : 21

Which entry in the public (external) DNS is valid to configure DNS SRV records for a Cisco Mobile and Remote Access solution?

- A. _cisco-uds._tcp.<domain>
- B. _cisco-mra._tls.<domain>
- C. _collab-edge._tls.<domain>
- D. _cisco-expwy._tls.<domain>

Answer: C

Question No : 22

A Jabber user is being prompted to trust the Expressway-E certificate when using Mobile and Remote Access. The administrator has validated that the Expressway-E certificate is being trusted by the machine running the Jabber client.

What else can be done to solve this problem?

- A. Create a new CSR with new information on the SAN field.
- B. Include Cisco Unified Communications Manager registration domain in the Expressway-E certificate as a SAN.
- C. Change the domain name.
- D. Change the FQDN of the Expressway.

Answer: B

Question No : 23

Refer to the exhibit.

```
C:\Users\Administrator>nslookup
Default Server: Win2016-AD.example.com
Address: 192.168.10.10

> set type=all
> _cisco-uds._tcp.example.com4
Server: Win2016-AD.example.com
Address: 192.168.10.10

_cisco-uds._tcp.example.com      SRV service location:
    priority      = 10
    weight        = 10
    port          = 8443
    svr hostname  = cucm.example.com

> _collab-edge._tls.example.com
Server: Win2016-AD.example.com
Address: 192.168.10.10

_collab-edge._tls.example.com    SRV service location:
    priority      = 10
    weight        = 10
    port          = 8443
    svr hostname  = expressway-e.example.com

>
```

When a Jabber user attempts to connect from outside of the organization, the user enters the login information as "user@example.com" and receives the error "Cannot find your services Automatically". The engineer tries to resolve SRV records used by Jabber.

DNS A record "expressway-e.example.com" points to the Expressway-E IP and "cucm.example.com" points to the Cisco Unified Communications Manager.

Which change resolves the DNS problem?

- A. Change cisco-uds to point to the Expressway-E FQDN.
- B. Change the collab-edge record to point to 5061.
- C. Remove the cisco-uds SRV record for the external DNS.
- D. Change the priority of the SRV record for cisco-uds.

Answer: C

Refer to the exhibit.

```

tvcs: Event="System Configuration Changed" Detail="xConfiguration Bandwidth
Link 17 Pipe2 Name: " Level="1"
httpd[10591]: web: Event="System Configuration Changed" Detail="Create Zones
Zone 7 ZoneName: cms4.pod1.local" Src-ip="10.0.251.192" Src-port="50107"
User="admin" Level="1"
httpd[10591]: web: Event="System Configuration Changed" Detail="Create Zones
Zone 7 Type: Neighbor" Src-ip="10.0.251.192" Src-port="50107" User="admin"
Level="1"
httpd[10591]: web: Event="System Configuration Changed" Detail="Zones Zone 7
H323 Mode - changed from: On to: Off" Src-ip="10.0.251.192" Src-port="50107"
User="admin" Level="1"
httpd[10591]: web: Event="System Configuration Changed" Detail="Zones Zone 7
Neighbor SIP B2BUA Replaces Mode - changed from: Forward to: Terminate"
Src-ip="10.0.251.192" Src-port="50107" User="admin" Level="1"
httpd[10591]: web: Event="System Configuration Changed" Detail="Zones Zone 7
Neighbor Peer Address - changed from: to: cms4.pod1.local"
Src-ip="10.0.251.192" Src-port="50107" User="admin" Level="1"
tvcs: Event="System Configuration Changed" Detail="xConfiguration Zones Zone 7
H323 Mode: Off" Level="1"
tvcs: Event="System Configuration Changed" Detail="xConfiguration Zones Zone 7
Neighbor SIP B2BUA Replaces Mode: Terminate" Level="1"
tvcs: Module="network.dns" Level="DEBUG": Detail="Sending DNS query"
Name="cms4.pod1.local" Type="A and AAAA"
tvcs: Event="System Configuration Changed" Detail="xConfiguration Zones Zone 7
Neighbor Peer 1 Address: cms4.pod1.local" Level="1"
tvcs: Module="network.dns" Level="DEBUG": Detail="Could not resolve hostname"

```

A new neighbor zone is added for a new Cisco Meeting Server, but the zone is showing a SIP status of failed from the time the zone it was created. What should be done to resolve this issue?

- A. The search rule must be changed to continue on match
- B. The existing zone using ID 7 must be deleted
- C. More bandwidth must be added to the appropriate pipes
- D. The underlying DNS issue must be resolved

Answer: A

Question No : 25

Which connection does the traversal zone configuration define?

- A. Expressway-E and Collaboration Endpoints
- B. Cisco UC and Cisco Unified Presence Server
- C. Cisco Expressway-C and Cisco Expressway-E platforms
- D. Cisco UCS E-Series and Cisco UCM

Answer: C

Reference:

https://www.cisco.com/c/dam/en/us/td/docs/voice_ip_comm/expressway/config_guide/X8-11/Cisco-Expressway-Basic-Configuration-Deployment-Guide-X8-11-4.pdf

Question No : 26

A company has enabled ICE to optimize call flows and improve video quality between their Cisco Collaboration endpoints internally and externally.

For which reason would you see activity on the TURN server when a call is established between two external endpoints?

- A. The video call is using encryption, which is not supported by ICE with CUCM 12.5
- B. ICE cannot reduce the packet loss on the link
- C. A STUN cannot punch holes in the firewall
- D. The video call is using 4K resolution, which is not supported by ICE with CUCM 12.5

Answer: A

Question No : 27

Refer to the exhibit.

The screenshot shows the 'Create transform' configuration page. The breadcrumb trail at the top indicates the path: Configuration > Dial plan > Transform > Create transform. The 'Configuration' tab is selected. The fields are as follows:

Field	Value
Priority	5
Description	Convert Untitled CM supplied domain information to the Expressway SIP domain
Pattern type	Regex
Pattern string	(4\d{3})@exp-name.exp.domain *?
Pattern behavior	Replace
Replace string	\1@exp.domain
State	Enabled

At the bottom, there are 'Create transform' and 'Cancel' buttons.

Which description of the transformation is true?