

vmware



5V0-41.20

VMware SD-WAN Troubleshoot



EXAMKILLER

Help Pass Your Exam At First Try

VMware

Exam 5V0-41.20

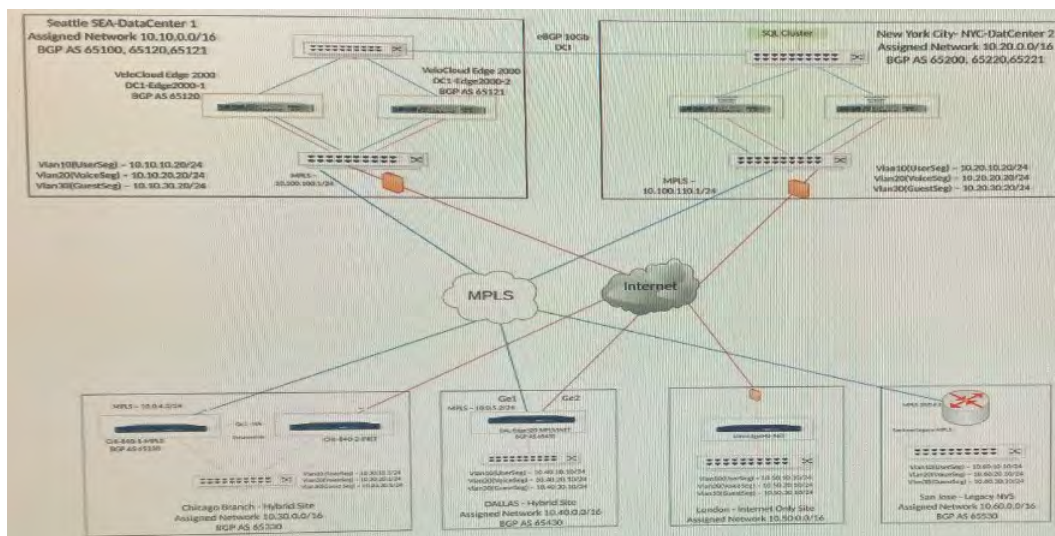
VMware SD-WAN Troubleshoot

Version: 3.1

[Total Questions: 36]

Question No : 1**Scenario 3:**

After resolving numerous connectivity issues throughout the various branch sites, connectivity between applications and users is finally present. The network administrator is informed that during certain tests, applications are not performing as they are expected to. Users report that call quality has not fully improved and that some of their calls either drop or have poor voice quality where the conversation is breaking up. Other users are noticing that file transfers are slower than expect. A group of users from a few sites have reported slowness in accessing internal and external applications.

Exhibit.

A network engineer is configuring an Internet Backhaul Policy for the Chicago Branch to utilize NY's hub as a much better source for Internet for certain SaaS applications. For an unknown reason, the network engineer is not able to select the hubs in the Internet Backhaul Policy.

What could be the reason?

- A. The Dynamic Branch to Branch has not been enabled.
- B. The hub is not configured with the proper IP address.
- C. Dynamic Branch to Branch using gateways has not been enabled.
- D. The Edge's profile does not include Backhaul hubs as an option.

Answer: C

Question No : 2

Scenario 3:

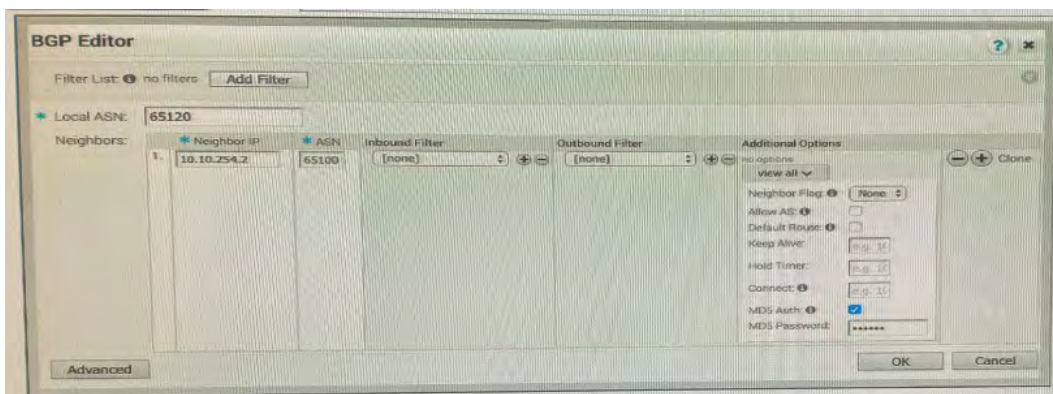
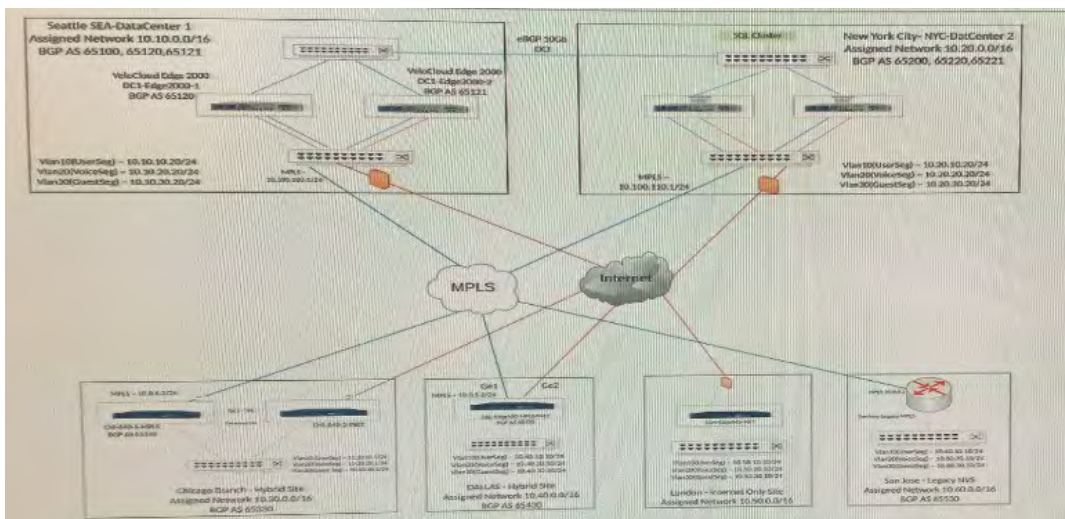
After resolving numerous connectivity issues throughout the various branch sites, connectivity between applications and users is finally present. The network administrator is informed that during certain tests, applications are not performing as they are expected to. Users report that call quality has not fully improved and that some of their calls either drop or have poor voice quality where the conversation is breaking up. Other users are noticing that file transfers are slower than expect. A group of users from a few sites have reported slowness in accessing internal and external applications.

Users at multiple branches complain that a highly performant SQL Database cluster residing at the New York Data Center is not responding to database queries or inserts as expected. It is affecting the order management site. A network administrator investigates and finds that traffic from the branches are going through Seattle to reach the SQL Cluster in New York. The design for this SD-WAN network does not call for routing security.

The SQL Cluster is reachable through either Data Center, but for performance reasons, must flow through the New York DC. The network administrator has verified that the routes are not present in the OFC and the BGP neighborship is down in Network Services.

Refer to the Exhibit(s).

Exhibit.



What should the administrator verify?

- A. The BGP configuration has a filter in place to deny the prefix in New York.
- B. The BGP Authentication matches on both sides.
- C. The BGP configuration has a filter in place to deny the prefix in Seattle.
- D. Backhauling through the Seattle DC is disabled.

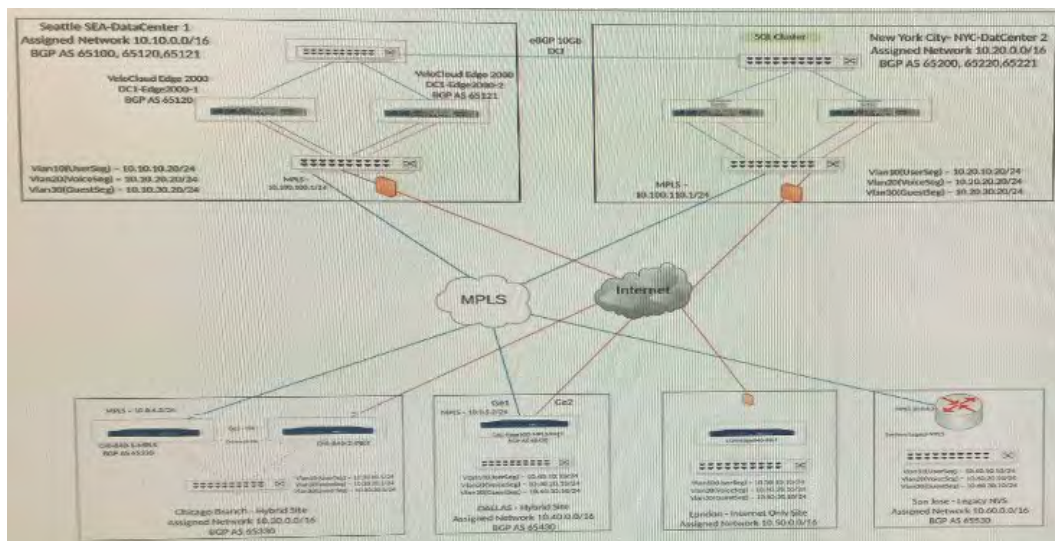
Answer: D

Question No : 3

Scenario 3:

After resolving numerous connectivity issues throughout the various branch sites, connectivity between applications and users is finally present. The network administrator is informed that during certain tests, applications are not performing as they are expected to. Users report that call quality has not fully improved and that some of their calls either drop or have poor voice quality where the conversation is breaking up. Other users are noticing that file transfers are slower than expect. A group of users from a few sites have reported slowness in accessing; internal and external applications.

Exhibit.



A network administrator is configuring several branches to prefer a single prefix, 10.20.11.0/24, from the Seattle hub over the New York hub for various application performance reasons.

What are two effective ways the administrator can accomplish this? (Choose two.)

- A. Modify the AS Path in New York to be shorter for 10.20.11.0/24.
- B. In the hub preferred order in the profile, set the Seattle hub to be preferred over New

York.

C. Modify the AS Path in New York to be longer for 10.20.11.0/24.

D. In the OFC 10.20.11.0/24, modify the preferred exit point to be Seattle and pin the route.

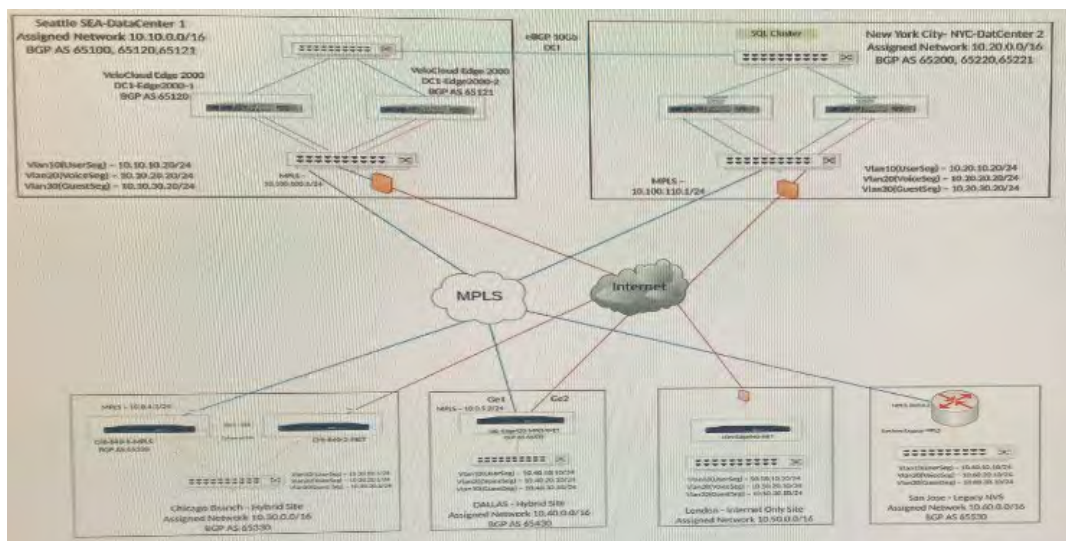
Answer: B,D

Question No : 4

Scenario 3:

After resolving numerous connectivity issues throughout the various branch sites, connectivity between applications and users is finally present. The network administrator is informed that during certain tests, applications are not performing as they are expected to. Users report that call quality has not fully improved and that some of their calls either drop or have poor voice quality where the conversation is breaking up. Other users are noticing that file transfers are slower than expect. A group of users from a few sites have reported slowness in accessing internal and external applications.

Exhibit.



A network administrator wants to achieve better high-availability and network reconvergence between LAN-side BGP Networks and the hub Edges in New York.

What must the administrator do?

- A.** Modify the Keep Alive and Hold timers to the lowest possible values ensuring the Hold timer is 3 times more than the Keep Alive timer.
- B.** Nothing, the system will auto-rebalance connections and will provide sub-second convergence.
- C.** Modify the Connect and Hold timers to the lowest possible values ensuring the Hold timer is 3 times more than the Connect timer.

D. Modify the Keep Alive and Hold timers to the lowest possible values ensuring the Keep Alive timer is 3 times more than the Hold timer.

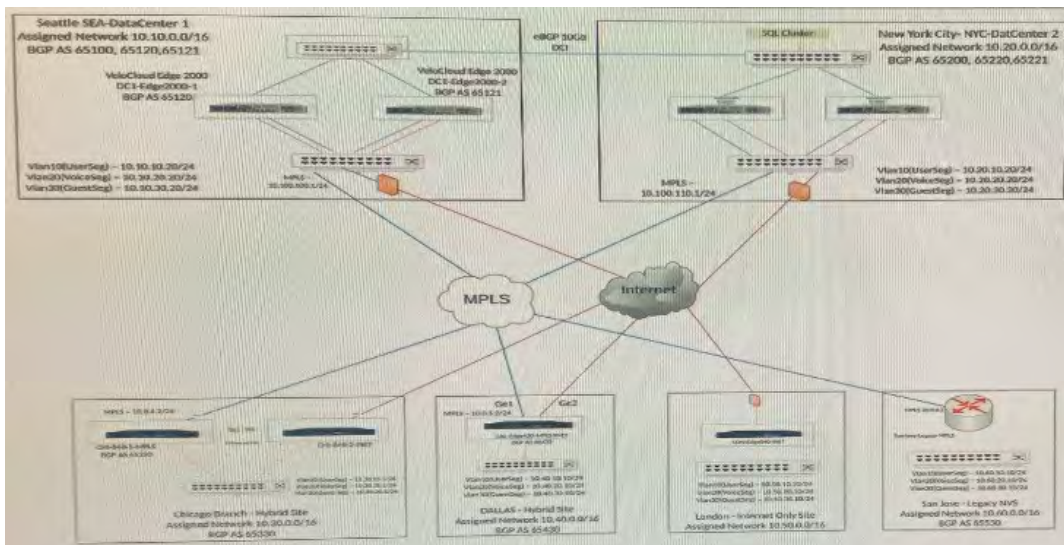
Answer: B

Question No : 5

Scenario 2:

After completing the branch activation activities for all required branches, the administrator attempts to test connectivity between the various branches and between the hubs and branches- The administrator notices a lack of connectivity despite being certain that configurations have been complete. The administrator also observed that several users are reporting intermittent connectivity to some of the applications they are accessing. Other users are reporting no access to these applications. Other users at some of the branches claim they cannot get to certain public resources. The administrator wants to ensure that all sites can talk to each other and all resources are accessible.

Exhibit.



The tunnel from the Dallas site to the Seattle hub is not coming up.

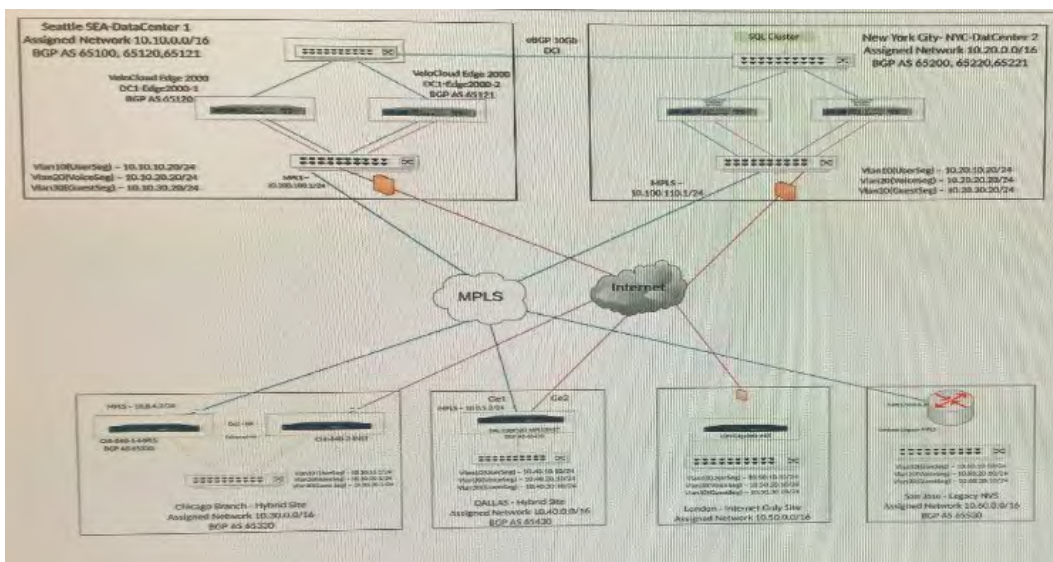
What are two things that should be checked to determine the issue? (Choose two.)

- A.** Hub WAN Interface might be behind a firewall.
- B.** Spoke Edge and Hub Edge have a mismatched certificate.
- C.** Dynamic Branch to Branch is not enabled.
- D.** Spoke Edge and Hub Edge are two different Edge models.

Answer: A,B

Question No : 6**Scenario 2:**

After completing the branch activation activities for all required branches, the network administrator attempts to test connectivity between the various branches and between the hubs and branches. The administrator notices a lack of connectivity despite being certain that configurations have been complete. The administrator also observed that several users are reporting intermittent connectivity to some of the applications they are accessing. Other users are reporting no access to these applications. Other users at some of the branches claim they cannot get to certain public resources. The administrator wants to ensure that all sites can talk to each other and all resources are accessible.

Exhibit.

Users at the London site are complaining of various intermittent issues around websites not loading, or applications being remotely accessed disconnecting sporadically and reconnecting after a few minutes. The network administrator does not see anything strange on the Edge overview page and decides to check if the CPU or memory have been hitting close to 100%.

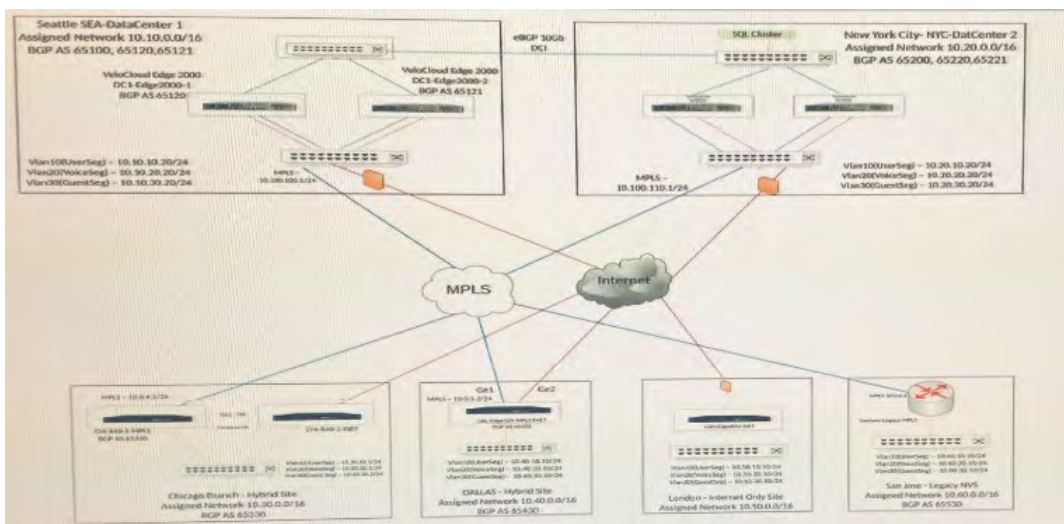
Where should the administrator verify this information?

- A. In the VCO > Test 8c Troubleshoot > Remote Diagnostics > System Status
- B. In the VCO > Monitor > Click London_Site01 > Click the System Tab
- C. In the VCO > Remote Troubleshooting > Remote Actions > System Status
- D. In the VCO > Monitor > Alerts

Answer: B

Question No : 7**Scenario 3:**

After resolving numerous connectivity issues throughout the various branch sites, connectivity between applications and users is finally present. The network administrator is informed that during certain tests, applications are not performing as they are expected to. Users report that call quality has not fully improved and that some of their calls either drop or have poor voice quality where the conversation is breaking up. Other users are noticing that file transfers are slower than expect. A group of users from a few sites have reported slowness in accessing internal and external applications.

Exhibit.

A network administrator is receiving complaints that a real-time voice application is not performing well, with choppy audio, and dead audio especially during peak traffic times.

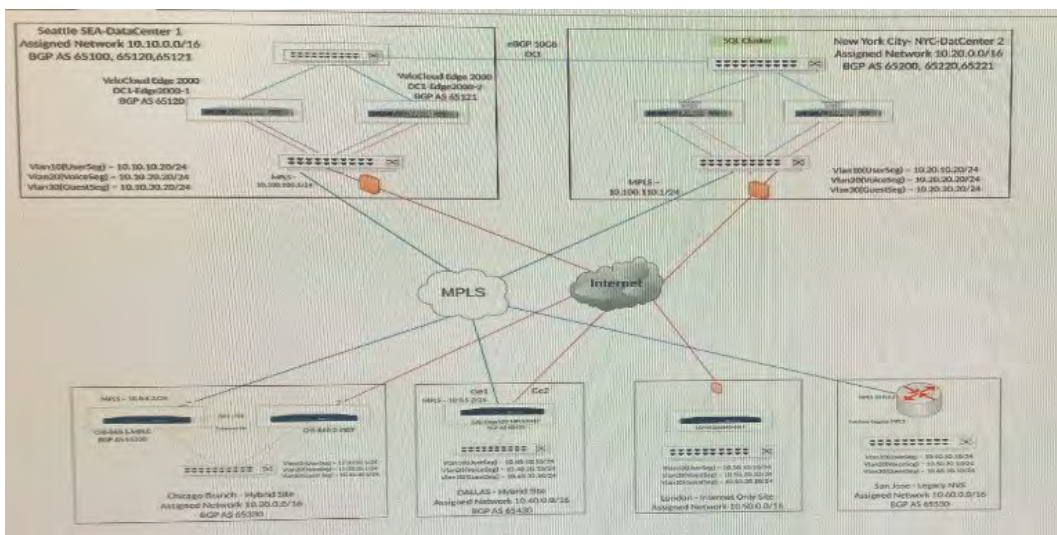
What two actions can the administrator take to diagnose and fix the issue? (Choose two.)

- A.** Configure a QoS policy to rate limit all traffic during peak times.
- B.** Ensure that the realtime application is matching the correct application type using the diagnostics page.
- C.** Check the status of the links using the QoE and Transport tabs for any degraded underlay issues or congestion issues.
- D.** Configure a QoS policy to load balance the realtime traffic across all links.

Answer: A,C

Question No : 8**Scenario 2:**

After completing the branch activation activities for all required branches, the network administrator attempts to test connectivity between the various branches and between the hubs and branches. The administrator notices a lack of connectivity despite being certain that configurations have been complete. The administrator also observed that several users are reporting intermittent connectivity to some of the applications they are accessing. Other users are reporting no access to these applications. Other users at some of the branches claim they cannot get to certain public resources. The administrator wants to ensure that all sites can talk to each other and all resources are accessible.

Exhibit.

A network administrator has received an email from the applications development team requesting connectivity to their AWS VPC.

The administrator has configured the tunnel via the VMware SD-WAN Gateway. The tunnel status icon has not turned green.

Where are two places the administrator must check? (Choose two.)

- A. Determine if the DH parameter on the Edge has been configured.
- B. Determine if the PSK is mismatched between the AWS side and the VeloCloud Edge.
- C. Determine if the NVS has been enabled and assigned to a profile.
- D. Determine if the PSK is mismatched between the AWS side and the VeloCloud Gateway.

Answer: B,D