

# Practice Exam Questions



Blue Prism Accredited Developer



**EXAMKILLER**

Help Pass Your Exam At First Try

# **Blue Prism**

## **Exam AD01**

### **Blue Prism Accredited Developer Exam**

**Version: 12.0**

**[ Total Questions: 100 ]**

**Question No : 1**

When designing a Blue Prism solution a Blue Prism architect must respect the requirement that no customer data is visible within the Blue Prism database.

Consider these possible design alternatives:

1. No customer data in the work queue
2. Encrypt the data in the work queue
3. Switch off all stage parameter logging

Which combination of the above will guarantee that no customer data is visible in the Blue Prism log file?

- A. 1 only
- B. 2 and 3
- C. 1 and 3
- D. None

**Answer: B**

**Question No : 2**

When a process is running in Control Room which of the following functions within the process can be accessed from Control Room to request the process to stop?

- A. Stop()
- B. IsStopRequestec?
- C. IsStopRequested()
- D. StopNow()
- E. Stop?
- F. StopNow?

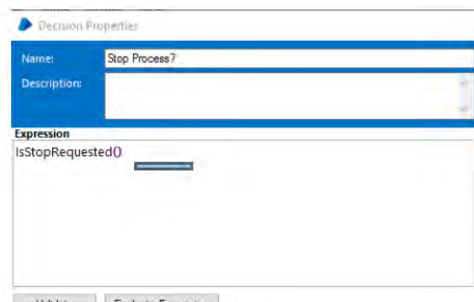
**Answer: C**

**Explanation:** Reason: IsStopRequested() function is used for the immediate stop provided by the blueprism (mentioned in the foundation course)

Figure 144: Context Menu for Running Processes

**Immediate Stop** is the equivalent of **Stop Selection**. **Request Stop** will ask the process to stop where there is a configured safe stop with the process.

You can configure a safe stop within your process by using the inbuilt Environment function `IsStopRequested()` within a Decision stage.



### Question No : 3

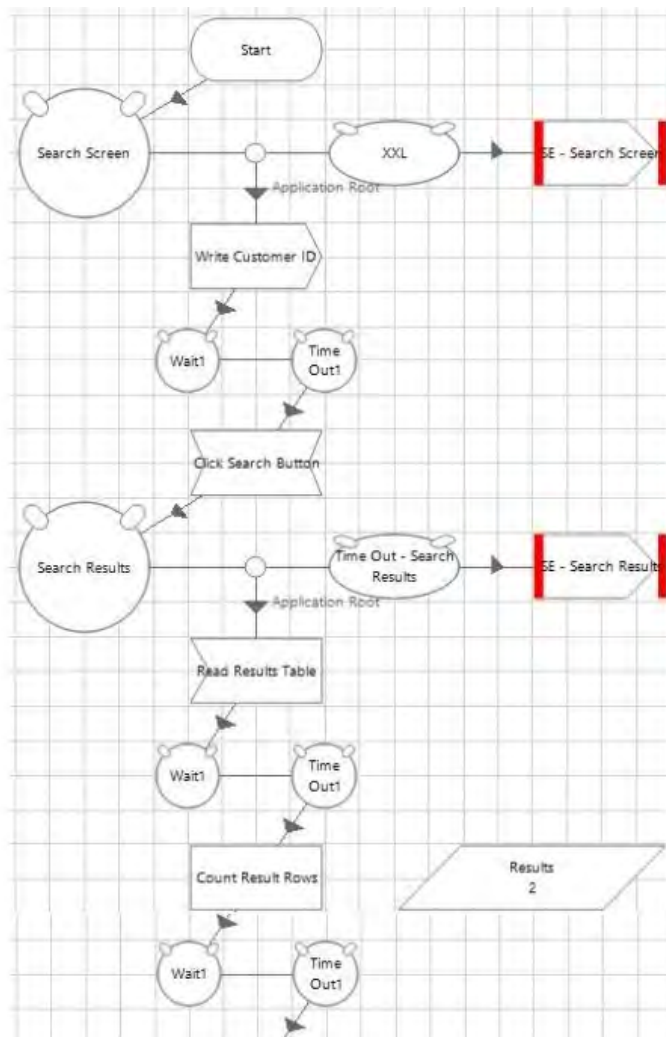
When building a solution to use Tags within a Work Queue, which of the following statements is correct true?

- A. Adding a tag requires an item to be locked
- B. Adding a tag requires an item to be locked if there are multiple resources working the same queue
- C. Adding a tag does not require an item to be locked

**Answer: C**

### Question No : 4

Consider the following flow in an object:



Which of these statements is true?

- A.** The flow shown in the diagram is correct, the wait stages are all adding a high level of robustness to the action
- B.** The wait stages after read and write stages should be removed they are not required and are slowing the flow down
- C.** The wait stages after read stages should be removed, the wait stages after write stages should be left because the application will have been changed
- D.** Only the first wait stage in this flow is required, all the other wait stages should be removed.

**Answer: B**

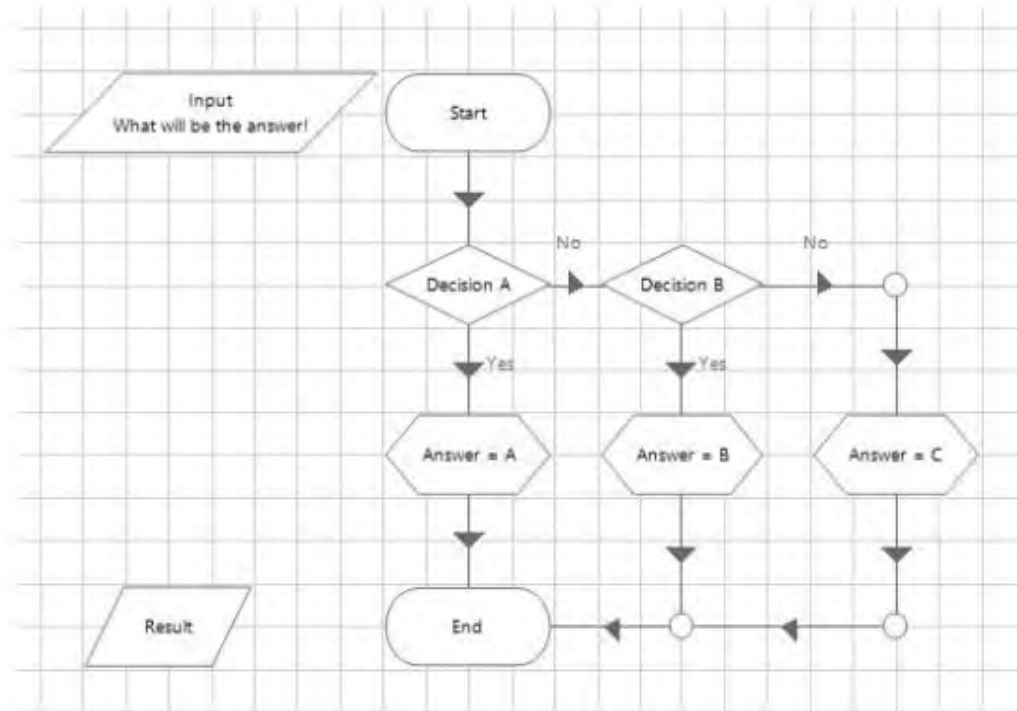
**Explanation:**

**Reason:** There is no wait stage required after Read and write stage as it makes the process lengthy here, because here no activity is performed which are taking time to read and write so wait is not useful.

Here wait is required for search fields as there the activity is happening in which it is required for wait.

**Question No : 5**

Study the following page in a process:



Decision Properties

Name: Decision B

Description:

Expression

Len(Trim([Input]) > 20

Calculation stages will write A, B or C to the Output value data item.

What will be the outcome after the page has run?

- A. Data Item Output Value contains "A"
- B. Data Item Output Value contains "B"
- C. Data Item Output Value contains "C"
- D. An Internal Exception will be thrown

**Answer: D**

**Question No : 6**

Which of the following indicates a case in a Work Queue is currently being processed?

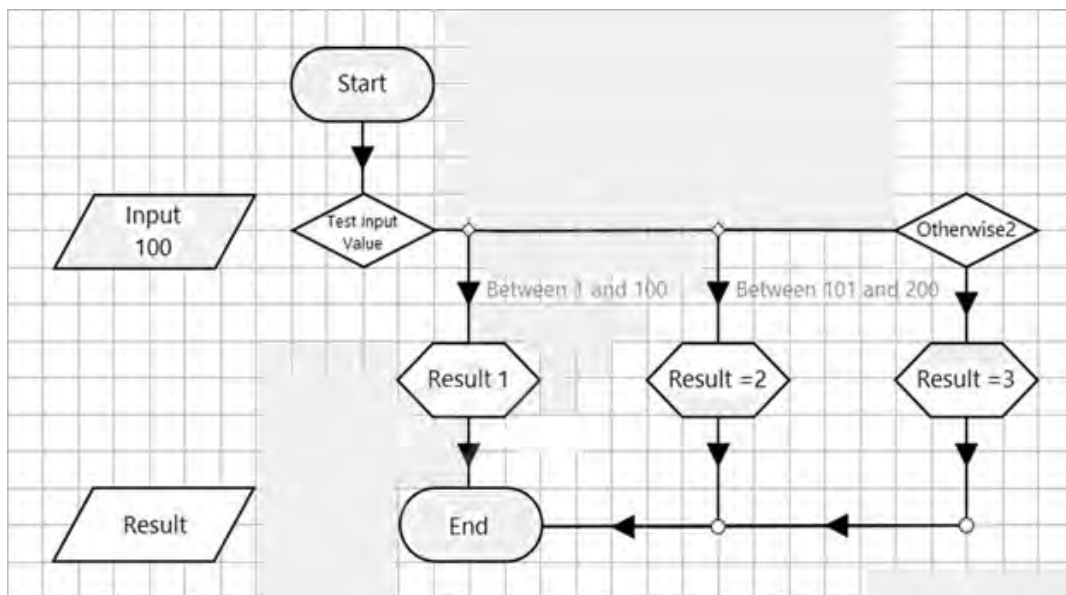


- A. Option A
- B. Option B
- C. Option C
- D. Option D

**Answer: C**

**Question No : 7**

Study the following Process flow:



The Process flow is intended to test the value of the Input data item to determine if it falls within a range of numbers, and then assign a value as an output. The number ranges are defined as between 1 to 100, between 101 to 200, and anything outside these ranges.

The Calculation stages will set the value of the Result data item to 1, 2 or 3.

To enable the Process flow to work correctly, what is the correct expression for the Choice stage branch named 'Between 1 and 100'?

- A. [Input] >= 1 AND [Input] <= 100
- B. [Input] >= 1 AND <= 100
- C. [Input] >= '1' AND [Input] <= '100'
- D. [Input] >= 1 [Input] < 100
- E. [Input] BETWEEN 1 AND 100

**Answer: B**

#### Question No : 8

How can a session variable value be updated when a process is running? (select all that apply)

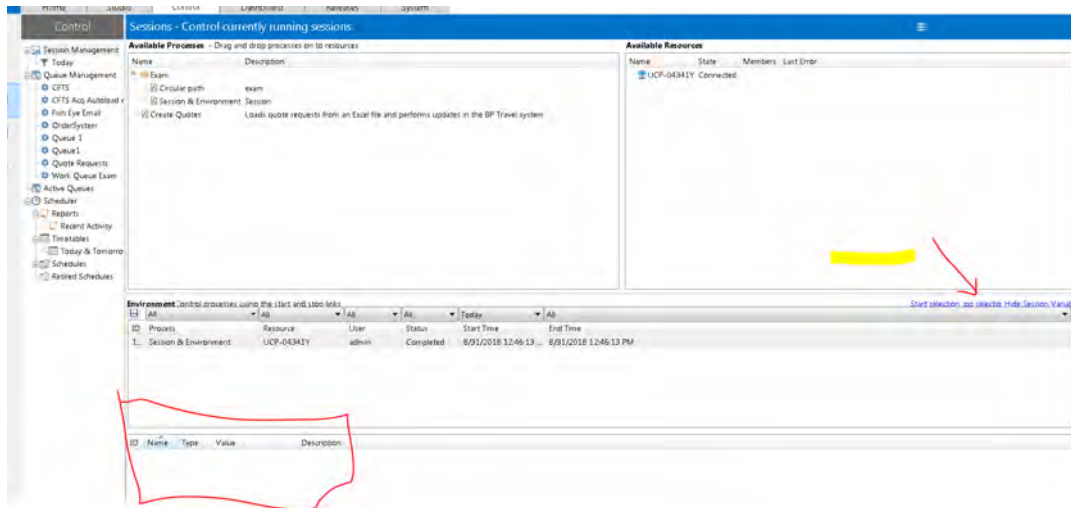
- A. By using the Internal - Session Variables business object.
- B. By pausing the Session Variables work queue.



- C. By updating the value in Credential Manager.  
D. By updating the value in Control Room.

**Answer: D**

**Explanation:** Reason: Session variable values to be update only in the Control room.  
Below is the reference.



### Question No : 9

If you change a session variable when will the new value be available to the process?

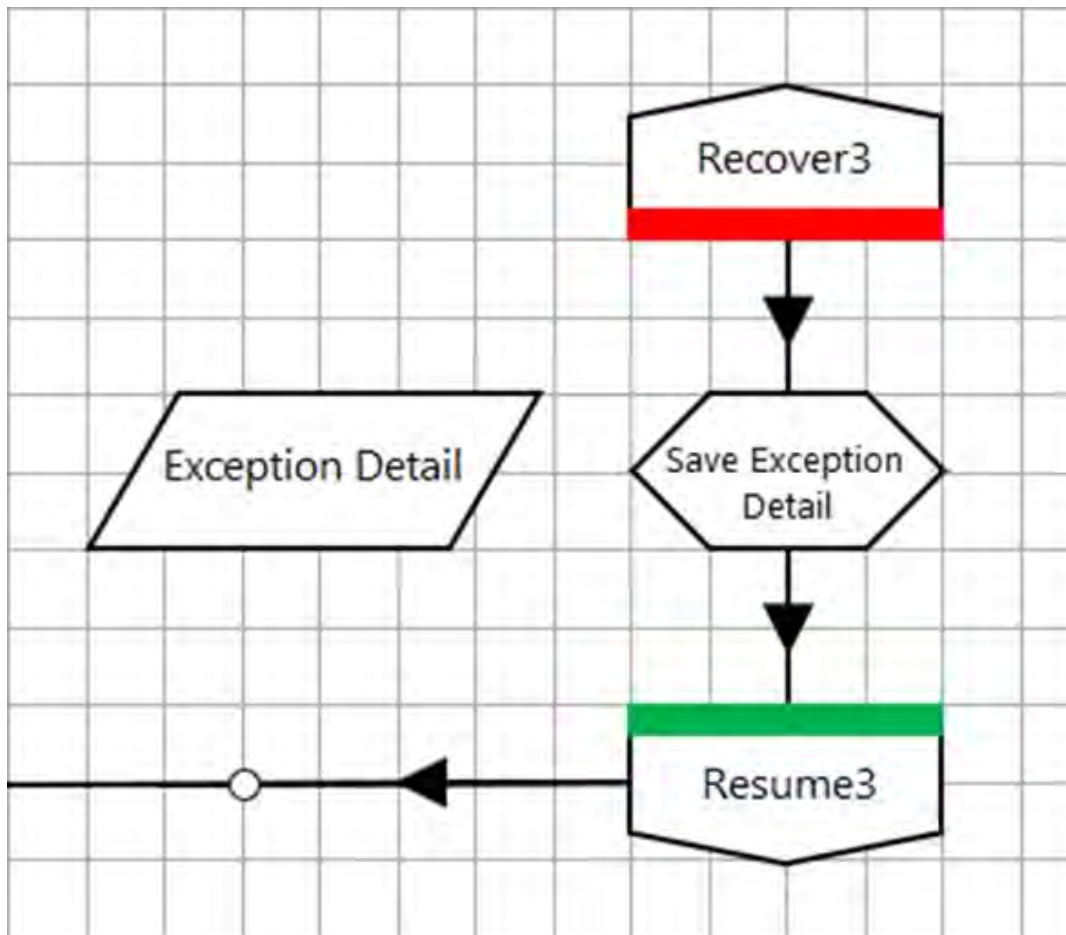
- A. Immediately  
B. Next time a new case is taken from a WQ  
C. Next time resource PC starts  
D. Next time the process starts

**Answer: A**

### Question No : 10 CORRECT TEXT

FILL BLANK

Examine the following recover flow taken from a Blue Prism Process:



The 'Exception Detail' data item has no initial value and has a data type of text.

The Calculation stage 'Save Exception Detail' will output the current exception detail to the 'Exception Detail' data item.

What expression would you use in the 'Save Exception Detail' stage to achieve this?

**Answer:** ExceptionDetail()

#### Question No : 11

Which of the following statements regarding the use of Work Queues are correct? (select 2 responses)

- A.** Control Room allows filtering of the displayed queue items using exact tags and by using wildcards
- B.** Wildcards are not allowed in the Tag Fitter property of the Work Queues business object Get Next Item action

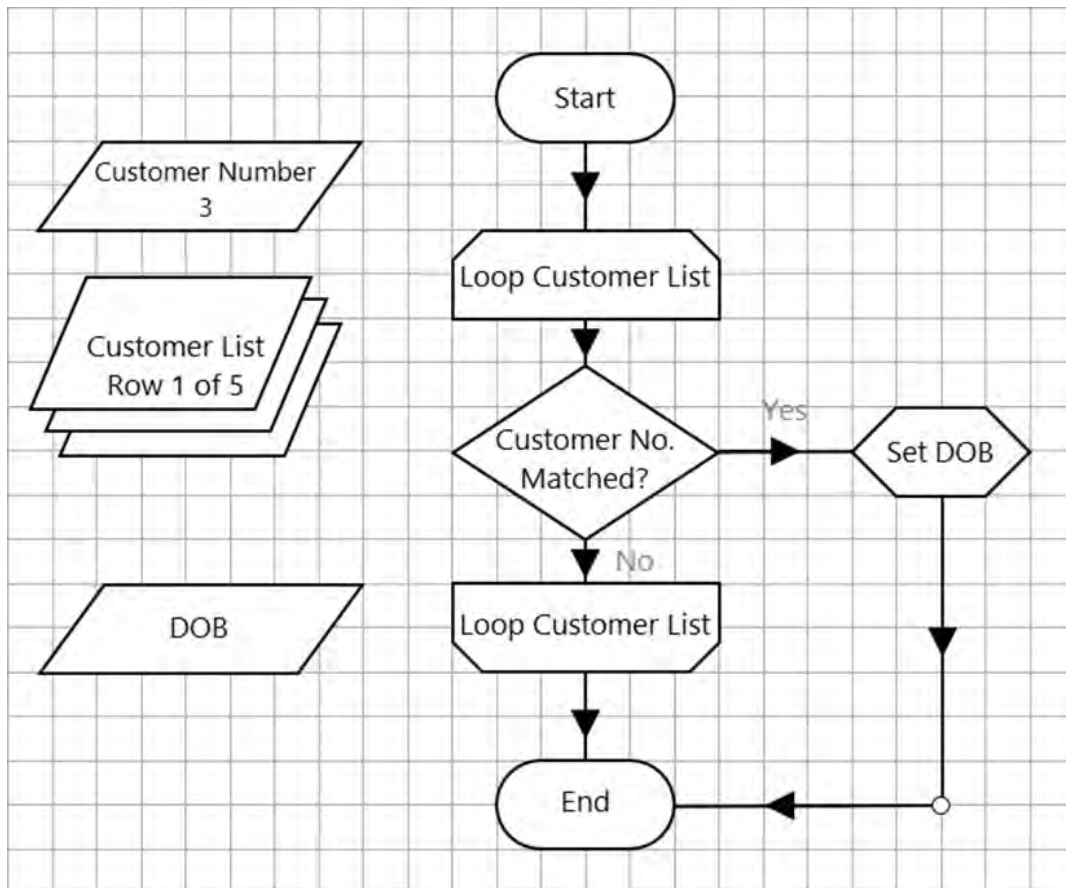
- C. Work Queue item Status can only be set to Completed or Exception
- D. Tags can be used allow flexibility in the order items are worked within a single Work Queue

Answer: A,C

**Question No : 12 CORRECT TEXT**

FILL BLANK

Review the Action flow below which loops through the Customer List Collection until the relevant customer match is found, and then uses the 'Set DOB' Calculation stage to copy the value from the Collection column 'DOB', to the DOB data item:



Collection Properties

Name: Customer List

Description:

Fields	Initial Values	Current Values	
Customer Number (Text)	First Name (Text)	Last Name (Text)	DOB (Date)
1	Jack	Sparrow	01/01/1960
2	Rachel	Weathers	25/05/1973
3	Jake	Robinson	15/12/1969
4	Angela	Freeman	19/12/1980
5	Morgan	Ramsey	26/02/2000

- The DOB data item is a Date data item with no initial value.
- The DOB column in the Customer List Collection is a Date data type.

What expression would you use in the 'Set DOB' Calculation stage, to copy the value from the Collection column, to the DOB data item?

*(Remember, Blue Prism expressions are case sensitive)*

**Answer:** [All Text] & [Coll.Field]

### Question No : 13

You identify an element in Application Modeller but when you highlight or use that element Blue Prism gives you an error message saying that duplicate elements were found.

Which of the following statements is true?

- A.** It is common for duplicate elements to be found based upon the attributes that are ticked by default using the Blue Prism product. Time needs to be spent experimenting with the attribute ticks until a unique, reliable, and consistent selection of attributes are found.
- B.** It will not be possible to interface with the element in a unique way. You will need to use Surface Automation techniques for this element.
- C.** A code stage interface will need to be created and used for this application, this will give you more flexibility to interact with the application elements.
- D.** You will need to make the attributes you have selected dynamic. This will allow your flow to loop around, incrementing the attribute value until the correct element is found and used.

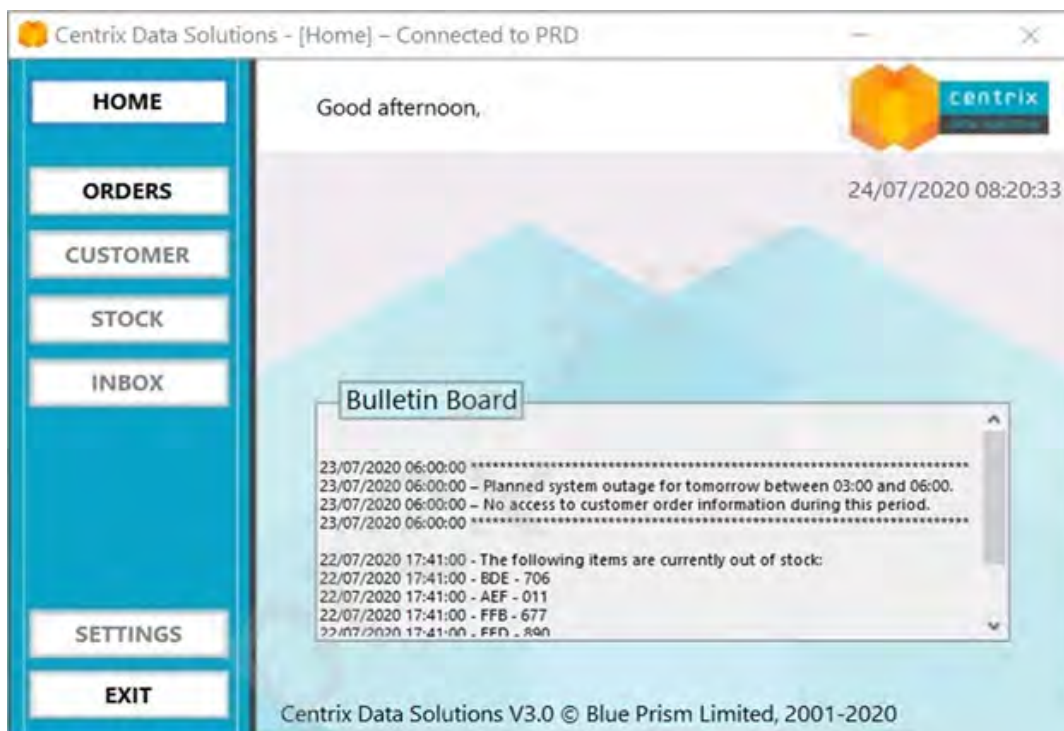
**Answer: A**

**Explanation:**

**Reason:** Is is common as the duplicate elements we are found by default as the attributes are provided by the application not by the blue prism. how do make our elements unique is not done by practicing and experience. ( This is also mentioned in the Foundation course and as well as in other Pdf too)

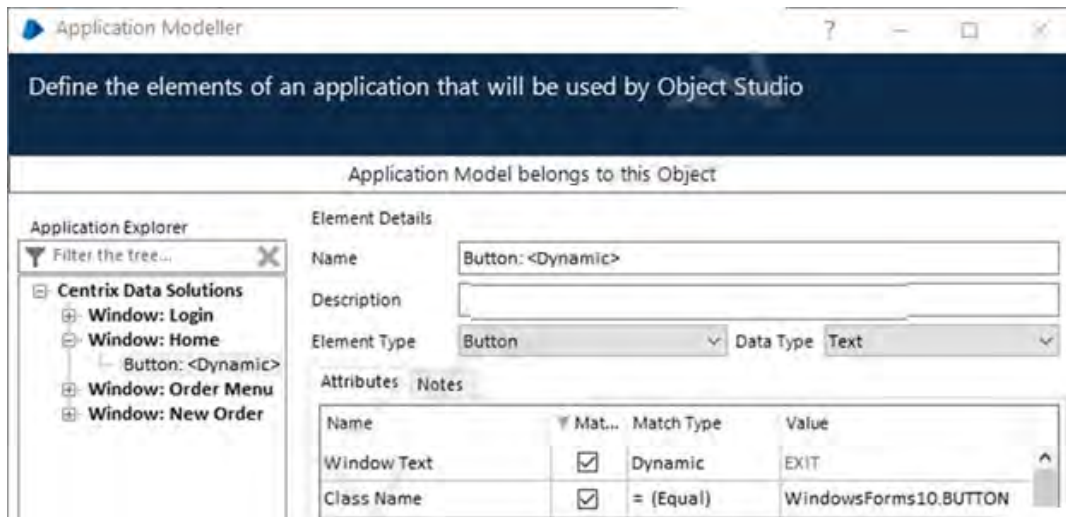
**Question No : 14**

The main menu of the application Centrix Data Solutions consists of a series of buttons, as displayed below:

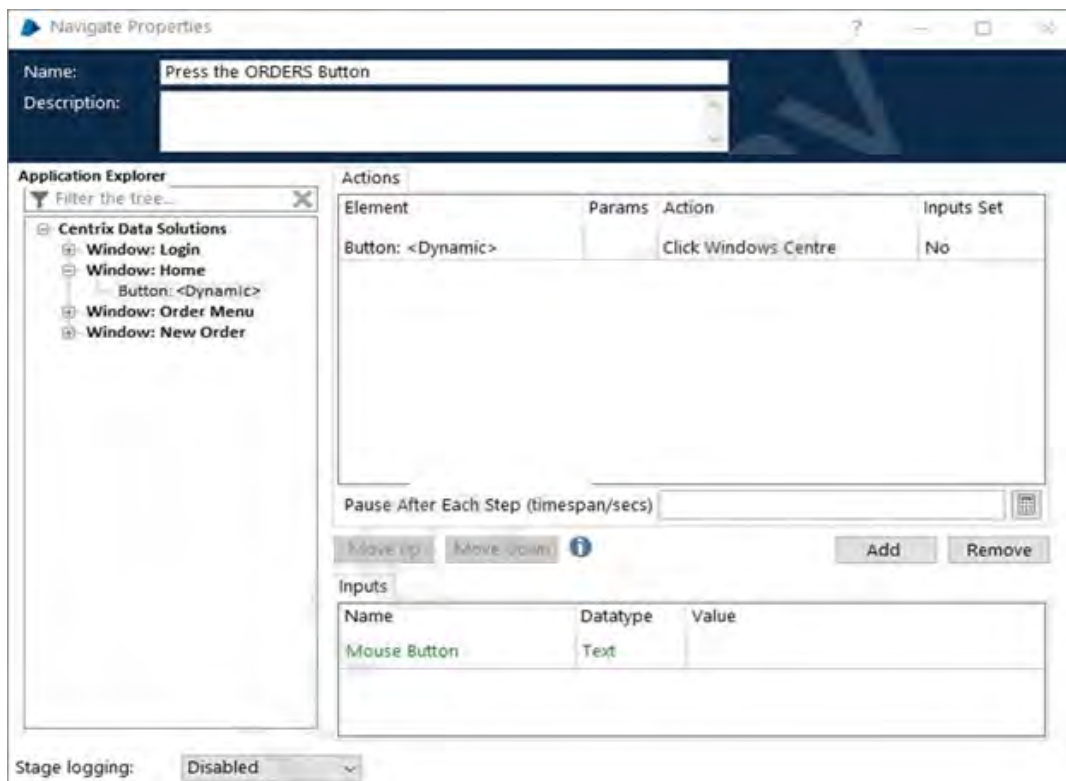


When the buttons spied, the element attributes are all identical, with the exception of the Window Text attribute which differs. The Window Text values for each of the buttons displayed above, are 'HOME', 'ORDERS', 'CUSTOMER', 'STOCK', 'INBOX', 'SETTINGS' and 'EXIT'.

It is described to use a single Dynamic element to interact with each of the menu buttons. The Dynamic button element has been spied and has the following attributes set:



A Navigate stage has been configured to press the ORDERS button:



To ensure the Navigate stage can click the ORDERS button successfully, what additional configuration is required in the Navigate stage?

- A. Update the 'Mouse Button' Inputs value to "ORDERS1"
- B. Using the Params button to open the Application Element Parameters window, the Window Text match value must be set to "ORDERS"
- C. A new element is required with the Window Text value set to 'Orders' and the Match Type set to equal

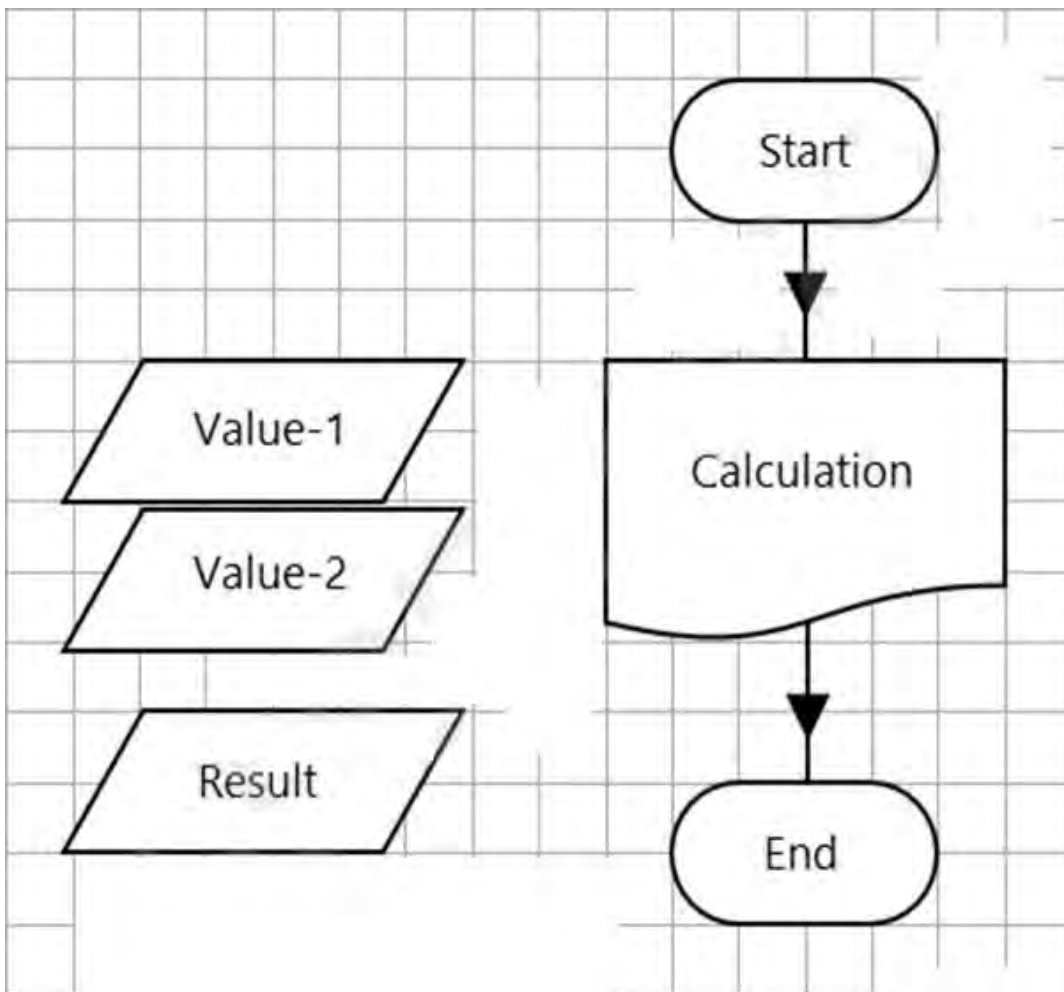


D. The ORDERS button cannot be clicked using this Dynamic button element, because the Window Text attribute value in Application Modeller is set as EXIT

Answer: B

**Question No : 15**

Examine the following Process flow:



This is the Main Page of a simple process which calls the 'Calculation' Page before completing.

The data items are configured as follows:

- ✎ Value-1 is a number data item with an initial value of 100.
- ✎ Value-2 is a number data item with an initial value of 4.
- ✎ Result is a number data item with no initial value.