



Test of Essential  
Academic Skills:  
Reading/Math/  
Science/English

Practice Test 1: total 170 QAs

Practice Test 2: total 170 QAs

Practice Test 3: total 170 QAs

## Practice Test 1

<b>Reading</b>	Number of Questions: 53
	Time Limit: 64 Minutes

1. Which of the answer choices gives the best definition for the underlined word in the following sentence?

Adelaide attempted to assuage her guilt over the piece of cheesecake by limiting herself to salads the following day.

- a. increase
- b. support
- c. appease
- d. conceal

2. Which of the following would best support the argument that people cause global climate change?

- a. The average global temperature has increased 1.5 degrees Fahrenheit since 1880.
- b. Common greenhouse gases include carbon dioxide and water vapor.
- c. Most of the greenhouse gases today come from burning things like coal and other fossil fuels for energy.
- d. The average person breathes out about 1.0 kg of carbon dioxide every day, while the average cow produces about 80 kg of methane.

*The next three questions are based on the following information.*

### The Dewey Decimal Classes

000 Computer science, information, and general works  
100 Philosophy and psychology  
200 Religion  
300 Social sciences  
400 Languages  
500 Science and mathematics  
600 Technical and applied science  
700 Arts and recreation  
800 Literature  
900 History, geography, and biography

3. Lise is doing a research project on the various psychological theories that Sigmund Freud developed and on the modern response to those theories. She is not sure where to begin, so she consults the chart of Dewey Decimal Classes. To which section of the library should she go to begin looking for research material?

- a. 100
- b. 200
- c. 300
- d. 900

4. During her research, Lise discovers that Freud's theory of the Oedipal complex was based on ancient Greek mythology that was made famous by Sophocles' play *Oedipus Rex*. To which section of the library should she go if she is interested in reading the play?

- a. 300
- b. 400
- c. 800
- d. 900

5. Also during her research, Lise learns about Freud's Jewish background, and she decides to compare Freud's theories to traditional Judaism. To which section of the library should she go for more information on this subject?

- a. 100
- b. 200
- c. 800
- d. 900

6. Which of the answer choices best describes the appropriateness of Mara's data sample in the following vignette?

Mara is conducting a study that will examine the ideas of middle school teachers, concerning the usage of iPhones in the classroom. She interviews all teachers who teach a computer software course.

- a. The sample is biased because it only includes teachers who are immersed in the technology field
- b. The sample is biased because the sample size is too small
- c. The sample is biased because the sample size is too large
- d. The sample is not biased and is appropriate for the study

7. Which of the answer choices gives the best definition for the underlined word in the following sentence?

Although his friends believed him to be enjoying a lavish lifestyle in the large family estate he had inherited, Enzo was in reality impecunious.

- a. Penniless
- b. Unfortunate
- c. Emotional
- d. Commanding

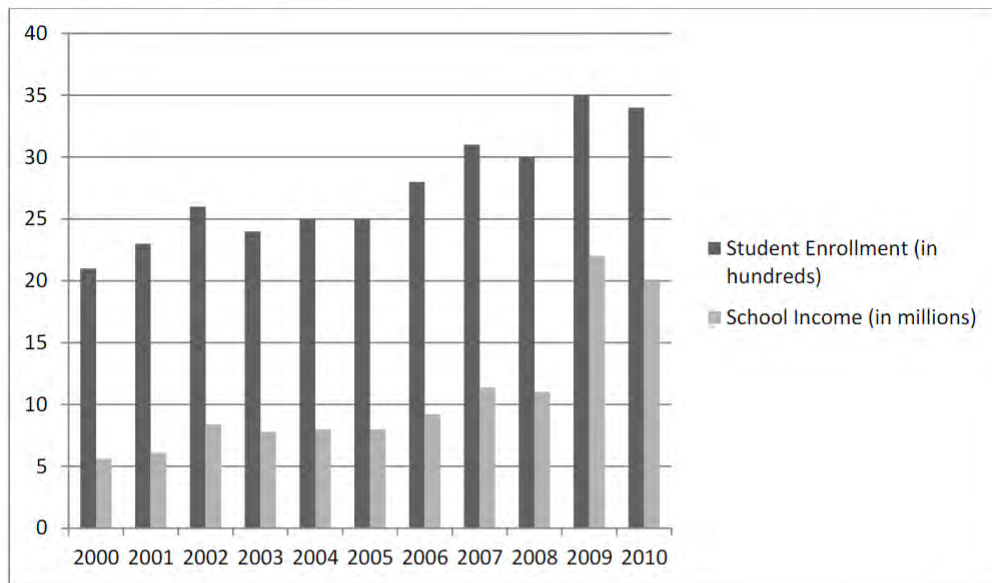
8. Follow the instructions below to transform the starting word into a different word.

- Start with the word ESOTERIC
- Remove both instances of the letter E from the word
- Remove the letter I from the word
- Move the letter T from the middle of the word to the end of the word
- Remove the letter C from the word

What new word has been spelled?

- a. SECT
- b. SORT
- c. SORE
- d. TORE

The next two questions are based on the following chart, which reflects the enrollment and the income for a small community college.



9. Based on the chart, approximately how many students attended the community college in the year 2001?

- a. 2100
- b. 2300
- c. 2500
- d. 2700

10. In order to offset costs, the college administration decided to increase admission fees. Reviewing the chart above, during which year is it most likely that the college raised the price of admission?

- a. 2002
- b. 2007
- c. 2009
- d. 2010

11. If the statements listed below are true, which of the answer choices is a logical conclusion?

Literacy rates are lower today than they were fifteen years ago. Then, most people learned to read through the use of phonics. Today, whole language programs are favored by many educators.

- a. whole language is more effective at teaching people to read than phonics.
- b. phonics is more effective at teaching people to read than whole language.
- c. literacy rates will probably continue to decline over the next 15 years.
- d. the definition of what it means to be literate is much stricter now.



*The next four questions are based on the following passage.*

### **The Bermuda Triangle**

The area known as the Bermuda Triangle has become such a part of popular culture that it can be difficult to separate fact from fiction. The interest first began when five Navy planes vanished in 1945, officially resulting from “causes or reasons unknown.” The explanations about other accidents in the Triangle range from the scientific to the supernatural. Researchers have never been able to find anything truly mysterious about what happens in the Bermuda Triangle, if there even is a Bermuda Triangle. What is more, one of the biggest challenges in considering the phenomenon is deciding how much area actually represents the Bermuda Triangle. Most consider the Triangle to stretch from Miami out to Puerto Rico and to include the island of Bermuda. Others expand the area to include all of the Caribbean islands and to extend eastward as far as the Azores, which are closer to Europe than they are to North America.

The problem with having a larger Bermuda Triangle is that it increases the odds of accidents. There is near-constant travel, by ship and by plane, across the Atlantic, and accidents are expected to occur. In fact, the Bermuda Triangle happens to fall within one of the busiest navigational regions in the world, and the reality of greater activity creates the possibility for more to go wrong. Shipping records suggest that there is not a greater than average loss of vessels within the Bermuda Triangle, and many researchers have argued that the reputation of the Triangle makes any accident seem out of the ordinary. In fact, most accidents fall within the expected margin of error. The increase in ships from East Asia no doubt contributes to an increase in accidents. And as for the story of the Navy planes that disappeared within the Triangle, many researchers now conclude that it was the result of mistakes on the part of the pilots who were flying into storm clouds and simply got lost.

**12. Which of the following describes this type of writing?**

- a. Narrative
- b. Persuasive
- c. Expository
- d. Technical

**13. Which of the following sentences is most representative of a summary sentence for this passage?**

- a. The problem with having a larger Bermuda Triangle is that it increases the odds of accidents.
- b. The area that is called the Bermuda Triangle happens to fall within one of the busiest navigational regions in the world, and the reality of greater activity creates the possibility for more to go wrong.
- c. One of the biggest challenges in considering the phenomenon is deciding how much area actually represents the Bermuda Triangle.
- d. Researchers have never been able to find anything truly mysterious about what happens in the Bermuda Triangle, if there even is a Bermuda Triangle.

**14. With which of the following statements would the author most likely agree?**

- a. There is no real mystery about the Bermuda Triangle because most events have reasonable explanations.
- b. Researchers are wrong to expand the focus of the Triangle to the Azores, because this increases the likelihood of accidents.
- c. The official statement of "causes or reasons unknown" in the loss of the Navy planes was a deliberate concealment from the Navy.
- d. Reducing the legends about the mysteries of the Bermuda Triangle will help to reduce the number of reported accidents or shipping losses in that region.

**15. Which of the following represents an opinion statement on the part of the author?**

- a. The problem with having a larger Bermuda Triangle is that it increases the odds of accidents.
- b. The area known as the Bermuda Triangle has become such a part of popular culture that it can be difficult to sort through the myth and locate the truth.
- c. The increase in ships from East Asia no doubt contributes to an increase in accidents.
- d. Most consider the Triangle to stretch from Miami to Puerto Rico and include the island of Bermuda.

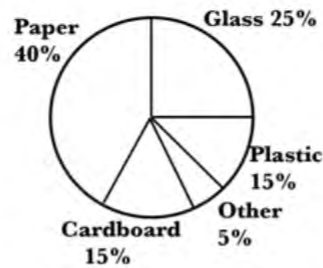
**16. Which of the following is a primary source?**

- a. A report of an original research experiment
- b. An academic textbook's citation of research
- c. A quotation of a researcher in a news article
- d. A website description of another's research

**17. The guide words at the top of a dictionary page are *intrauterine* and *invest*. Which of the following words is an entry on this page?**

- a. Intransigent
- b. Introspection
- c. Investiture
- d. Intone

The next question is based on the following chart.



18. A recycling company collects sorted materials from its clients. The materials are weighed and then processed for re-use. The chart shows the weights of various classes of materials that were collected by the company during a representative month. Which of the following statements is NOT supported by the data in the chart?

- a. Paper products, including cardboard, make up a majority of the collected materials.
- b. One quarter of the materials collected are made of glass.
- c. More plastic is collected than cardboard.
- d. Plastic and cardboard together represent a larger portion of the collected materials than glass bottles.

19. Ninette has celiac disease, which means that she cannot eat any product containing gluten. Gluten is a protein present in many grains such as wheat, rye, and barley. Because of her health condition, Ninette has to be careful about what she eats to avoid having an allergic reaction. She will be attending an all-day industry event, and she requested the menu in advance. Here is the menu:

- Breakfast: Fresh coffee or tea, scrambled eggs, bacon or sausage
- Lunch: Spinach salad (dressing available on the side), roasted chicken, steamed rice
- Cocktail Hour: Various beverages, fruit and cheese plate
- Dinner: Spaghetti and sauce, tossed salad, garlic bread

During which of these meals should Ninette be careful to bring her own food?

- a. Breakfast
- b. Lunch
- c. Cocktail Hour
- d. Dinner

20. Which of the following best provides detailed support for the claim that “seatbelts save lives”?

- a. A government website containing driving accident information
- b. A blog developed by one of the largest car companies in the world
- c. An encyclopedia entry on the seatbelt and its development
- d. An instant message sent out by a famous race car driver



**21. Which of the answer choices presents a valid inference based on the following scenario?**

**The latest movie by a certain director gets bad reviews before it opens in theatres.**

**Consequently, very few people go to the movie and the director is given much less money to make his next movie, which is also unsuccessful.**

- a. This director makes terrible movies
- b. The general public does not pay attention to movie reviews
- c. The movie reviewers were right about the first movie
- d. Movie reviewers exert influence on the movie quality

*The next three questions are based on the following table.*

NAME	COMPOSITION (PER 100)	WORLD LITERATURE (PER 100)	TECHNICAL WRITING (PER 100)	LINGUISTICS (PER 100)
Textbook- Mania	\$4500	\$5150	\$6000	\$6500
Textbook Central	\$4350	\$5200	\$6100	\$6550
Bookstore Supply	\$4675	\$5000	\$5950	\$6475
University Textbooks	\$4600	\$5000	\$6100	\$6650

*Note: Shipping is free for all schools that order 100 textbooks or more.*

**22. A school needs to purchase 500 composition textbooks and 500 world literature textbooks. Which of the textbook suppliers can offer the lowest price?**

- a. Textbook Mania
- b. Textbook Central
- c. Bookstore Supply
- d. University Textbooks

**23. A school needs to purchase 1000 composition textbooks and 300 linguistics textbooks. Which of the textbook suppliers can offer the lowest price?**

- a. Textbook Mania
- b. Textbook Central
- c. Bookstore Supply
- d. University Textbooks

**24. A school needs to purchase 400 world literature textbooks and 200 technical writing textbooks. Which of the textbook suppliers can offer the lowest price?**

- a. Textbook Mania
- b. Textbook Central
- c. Bookstore Supply
- d. University Textbooks



The next four questions are based on the following graphic.

**Table 1. Consumer Price Index for All Urban Consumers (CPI-U): U.S. city average, by expenditure category and commodity and service group**

(1982-84=100, unless otherwise noted)

Item and group	Relative importance, December 2008	Unadjusted indexes		Unadjusted percent change to June 2009 from—		Seasonally adjusted percent change from—		
		May 2009	June 2009	June 2008	May 2009	Mar. to Apr.	Apr. to May	May to June
Expenditure category								
All items .....	100.000	213.856	215.693	-1.4	0.9	0.0	0.1	0.7
All items (1967=100) .....	-	640.616	646.121	-	-	-	-	-
Food and beverages .....	15.757	218.076	218.030	2.2	.0	-2	-2	.1
Food .....	14.629	217.826	217.740	2.1	.0	-2	-2	.0
Food at home .....	8.156	215.088	214.824	.8	-.1	-6	-5	.0
Cereals and bakery products .....	1.150	252.714	253.008	3.0	.1	-7	-2	.0
Meats, poultry, fish, and eggs .....	1.898	203.789	204.031	.6	.1	.0	-.9	-.2
Dairy and related products <sup>1</sup> .....	.910	196.055	194.197	-7.1	-.9	-1.3	-.5	-.9
Fruits and vegetables .....	1.194	274.006	272.608	-1.9	-.5	.0	-1.0	1.1
Nonalcoholic beverages and beverage materials .....	.982	162.803	162.571	2.7	-.1	-1.0	-.1	.1
Other food at home .....	2.022	191.144	191.328	4.1	.1	-.8	-.1	.0
Sugar and sweets .....	.300	196.403	197.009	6.2	.3	-.5	.0	.2
Fats and oils .....	.241	200.679	201.127	2.5	.2	-1.4	-.7	.6
Other foods .....	1.481	205.587	205.654	3.9	.0	-.8	.0	-.2
Other miscellaneous foods <sup>1 2</sup> .....	.433	122.838	122.224	3.2	-.5	.4	.0	-.5
Food away from home <sup>1</sup> .....	6.474	223.023	223.163	3.8	.1	.3	.1	.1
Other food away from home <sup>1 2</sup> .....	.314	155.099	155.841	4.0	.5	.4	.0	.5
Alcoholic beverages .....	1.127	220.005	220.477	3.1	.2	-.1	.3	.2
Housing .....	43.421	216.971	218.071	.1	.5	-.1	-.1	.0
Shelter .....	33.200	249.779	250.243	1.3	.2	.2	.1	.1
Rent of primary residence <sup>3</sup> .....	5.957	249.069	249.092	2.7	.0	.2	.1	.1
Lodging away from home <sup>2</sup> .....	2.478	135.680	138.318	-6.9	1.9	.5	.1	.3
Owners' equivalent rent of primary residence <sup>3 4</sup> .....	24.433	256.875	256.981	1.9	.0	.1	.1	.1
Tenants' and household insurance <sup>1 2</sup> .....	.333	120.728	121.083	1.7	.3	-.1	.0	.3
Fuels and utilities .....	5.431	206.358	212.677	-8.1	3.1	-1.7	-1.3	-.8
Household energy .....	4.460	183.783	190.647	-10.8	3.7	-2.2	-1.8	-1.0
Fuel oil and other fuels .....	.301	225.164	232.638	-40.3	3.3	-2.1	-3.1	2.0
Gas (piped) and electricity <sup>3</sup> .....	4.159	189.619	196.754	-7.8	3.8	-2.2	-1.7	-1.2
Water and sewer and trash collection services <sup>2</sup> .....	.971	159.517	159.831	6.2	.2	.6	.6	.4
Household furnishings and operations .....	4.790	129.644	129.623	1.6	.0	.0	.0	.0
Household operations <sup>1 2</sup> .....	.781	149.468	149.995	1.3	.4	-.1	-.9	.4
Apparel .....	3.691	121.751	118.799	1.5	-2.4	-.2	-.2	.7
Men's and boys' apparel .....	.923	117.146	112.849	.7	-3.7	-1.7	.4	-.5
Women's and girls' apparel .....	1.541	109.480	106.455	2.1	-2.7	.2	-.1	1.6
Infants' and toddlers' apparel .....	.183	114.142	113.915	2.1	-.2	1.3	-1.6	2.2
Footwear .....	.688	127.519	125.515	1.6	-1.6	.4	.1	.2
Transportation .....	15.314	175.997	183.735	-13.2	4.4	-.4	.8	4.2
Private transportation .....	14.189	171.757	179.649	-13.3	4.6	-.3	.9	4.5
New and used motor vehicles <sup>2</sup> .....	6.931	92.701	93.020	-.6	.3	.4	.5	.4
New vehicles .....	4.480	135.162	135.719	.9	.4	.4	.5	.7
Used cars and trucks .....	1.628	122.650	124.323	-8.6	1.4	-.1	1.0	.9
Motor fuel .....	3.164	193.609	225.021	-35.2	16.2	-2.6	2.7	17.2
Gasoline (all types) .....	2.964	193.727	225.526	-34.6	16.4	-2.8	3.1	17.3
Motor vehicle parts and equipment <sup>1</sup> .....	.382	134.347	134.270	5.0	-.1	.1	-.2	-.1
Motor vehicle maintenance and repair <sup>1</sup> .....	1.188	242.488	242.683	4.1	.1	.2	-.1	.1
Public transportation .....	1.125	228.878	232.540	-12.1	1.6	-.8	-1.0	-.5

**25. Which of the following expense categories decreased in the year prior to June 2009?**

- Rent of primary residence
- Boys' and men's apparel
- Transportation
- Meats, fish, and eggs

**26. On a seasonally adjusted basis, which of the following decreased by the greatest percentage between April and May of 2009?**

- a. Gasoline
- b. Fuel oil and other fuels
- c. Infants' and toddlers' apparel
- d. Fruits and vegetables

**27. According to the organization of the table, which of the following expense categories is not considered to be a component of the "Food at Home" category?**

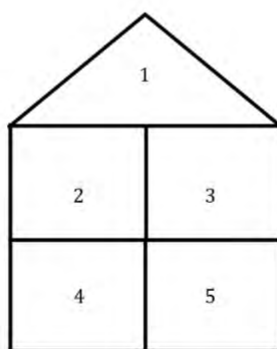
- a. Cereals and bakery products
- b. Fats and oils
- c. Other miscellaneous foods
- d. Alcoholic beverages

**28. Which expenditure category was the most important in December of 2008?**

- a. Housing
- b. Food and Beverages
- c. Apparel
- d. Transportation

*The next question refers to the following image.*

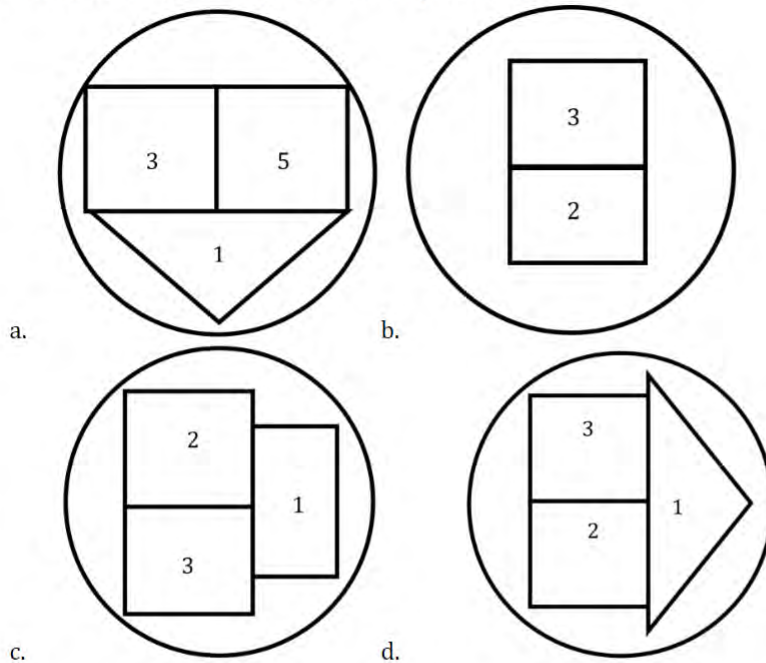
**Starting Image**



**Start with the shape pictured above. Follow the directions to alter its appearance.**

- Rotate section 1 90° clockwise and move it to the right side, against sections 3 and 5.
- Remove section 4.
- Move section 2 immediately above section 3.
- Swap section 2 and section 5.
- Remove section 5.
- Draw a circle around the shape, enclosing it completely.

29. Which of the following does the shape now look like?



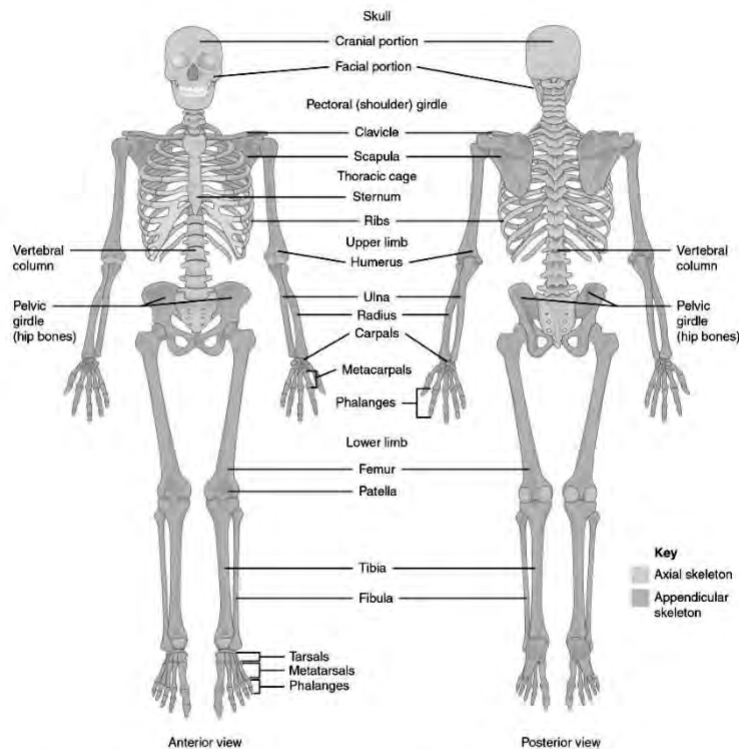
30. Anna is planning a trip to Bretagne, or Brittany, in the northwestern part of France. Since she knows very little about it, she is hoping to find the most up-to-date information with the widest variety of details about hiking trails, beaches, restaurants, and accommodations. Which of the following guides will be the best for her to review?

- The Top Ten Places to Visit in Brittany*, published by a non-profit organization in Bretagne looking to draw tourism to the region (2015)
- Getting to Know Nantes: Eating, Staying, and Sightseeing in Brittany's Largest City*, published by the French Ministry of Tourism (2014)
- Hiking Through Bretagne: The Best Trails for Discovering Northwestern France*, published by a company that specializes in travel for those wanting to experience the outdoors (2013)
- The Complete Guide to Brittany*, published by a travel book company that publishes guides for travel throughout Europe (2015)



The next three questions are based on the following passage.

An adult skeleton had 206 bones. The skeleton has two major divisions: the axial skeleton and the appendicular skeleton. Each bone belongs to either the axial skeleton or the appendicular skeleton. The axial skeleton, which consists of 80 bones including the skull, vertebrae, and rib, is located down the center of the body. The axial skeleton protects vital organs such as the brain and heart. The appendicular skeleton consists of 126 bones of the arms, legs, and the bones that attach these bones to the axial skeleton. The appendicular skeleton includes the scapulae (shoulder blades), clavicles (collarbones), and pelvic (hip) bones.



31. Which of the following bones is not associated with the leg?

- a. Femur
- b. Tibia
- c. Patella
- d. Radius

32. Which of the following bones is not part of the appendicular skeleton?

- a. Skull
- b. Clavicle
- c. Scapula
- d. Pelvic bone

**33. Which of the following bones are located in the hand?**

- a. Fibula
- b. Metacarpals
- c. Metatarsals
- d. Ulna

*The next three questions are based on the following passage.*

As little as three years before her birth, few would have thought that the child born Princess Alexandrina Victoria would eventually become Britain's longest reigning monarch, Queen Victoria. She was born in 1819, the only child of Edward, Duke of Kent, who was the fourth son of King George III. Ahead of Edward were three brothers, two of whom became king but none of whom produced a legitimate, surviving heir. King George's eldest son, who was eventually crowned King George IV, secretly married a Catholic commoner, Maria Fitzherbert, in 1783. The marriage was never officially recognized, and in 1795, George was persuaded to marry a distant cousin, Caroline of Brunswick. The marriage was bitter, and the two had only one daughter, Princess Charlotte Augusta. She was popular in England where her eventual reign was welcomed, but in a tragic event that shocked the nation, the princess and her stillborn son died in childbirth in 1817.

Realizing the precarious position of the British throne, the remaining sons of King George III were motivated to marry and produce an heir. The first in line was Prince Frederick, the Duke of York. Frederick married Princess Frederica Charlotte of Prussia, but the two had no children. After Prince Frederick was Prince William, the Duke of Clarence. William married Princess Adelaide of Saxe-Meiningen, and they had two sickly daughters, neither of whom survived infancy. Finally, Prince Edward, the Duke of Kent, threw his hat into the ring with his marriage to Princess Victoria of Saxe-Coburg-Saalfeld. The Duke of Kent died less than a year after his daughter's birth, but the surviving Duchess of Kent was not unaware of the future possibilities for her daughter. She took every precaution to ensure that the young Princess Victoria was healthy and safe throughout her childhood.

Princess Victoria's uncle, William, succeeded his brother George IV to become King William IV. The new king recognized his niece as his future heir, but he did not necessarily trust her mother. As a result, he was determined to survive until Victoria's eighteenth birthday to ensure that she could rule in her own right without the regency of the Duchess of Kent. The king's fervent prayers were answered: he died June 20, 1837, less than one month after Victoria turned eighteen. Though young and inexperienced, the young queen recognized the importance of her position and determined to rule fairly and wisely. The improbable princess who became queen ruled for more than sixty-three years, and her reign is considered to be one of the most important in British history.

**34. Which of the following is a logical conclusion that can be drawn from the information in the passage above?**

- a. Victoria's long reign provided the opportunity for her to bring balance to England and right the wrongs that had occurred during the reigns of her uncles.
- b. It was the death of Princess Charlotte Augusta that motivated the remaining princes to marry and start families.
- c. The Duke of Kent had hoped for a son but was delighted with his good fortune in producing the surviving heir that his brothers had failed to produce.
- d. King William IV was unreasonably suspicious of the Duchess of Kent's motivations, as she cared only for her daughter's well-being.

**35. What is the author's likely purpose in writing this passage about Queen Victoria?**

- a. To persuade the reader to appreciate the accomplishments of Queen Victoria, especially when placed against the failures of her forebears.
- b. To introduce the historical impact of the Victorian Era by introducing to readers the queen who gave that era its name.
- c. To explain how small events in history placed an unlikely princess in line to become the queen of England.
- d. To indicate the role that King George III's many sons played in changing the history of England.

**36. Based on the context of the passage, the reader can infer that this information is likely to appear in which of the following types of works?**

- a. A scholarly paper
- b. A mystery
- c. A fictional story
- d. A biography

*The next five questions are based on the following passage.*

In 1603, Queen Elizabeth I of England died. She had never married and had no heir, so the throne passed to a distant relative: James Stuart, the son of Elizabeth's cousin and one-time rival for the throne, Mary, Queen of Scots. James was crowned King James I of England. At the time, he was also King James VI of Scotland, and the combination of roles would create a spirit of conflict that haunted the two nations for generations to come.

The conflict developed as a result of rising tensions among the people within the nations, as well as between them. Scholars in the 21<sup>st</sup> century are far too hasty in dismissing the role of religion in political disputes, but religion undoubtedly played a role in the problems that faced England and Scotland. By the time of James Stuart's succession to the English throne, the English people had firmly embraced the teachings of Protestant theology. Similarly, the Scottish Lowlands was decisively Protestant. In the Scottish Highlands, however, the clans retained their Catholic faith. James acknowledged the Church of England and still sanctioned the largely Protestant translation of the Bible that still bears his name.

James's son King Charles I proved himself to be less committed to the Protestant Church of England. Charles married the Catholic Princess Henrietta Maria of France, and there were suspicions among the English and the Lowland Scots that Charles was quietly a Catholic. Charles's own political troubles extended beyond religion in this case, and he was beheaded



in 1649. Eventually, his son King Charles II would be crowned, and this Charles is believed to have converted secretly to the Catholic Church. Charles II died without a legitimate heir, and his brother James ascended to the throne as King James II.

James was recognized to be a practicing Catholic, and his commitment to Catholicism would prove to be his downfall. James's wife Mary Beatrice lost a number of children during their infancy, and when she became pregnant again in 1687 the public became concerned. If James had a son, that son would undoubtedly be raised a Catholic, and the English people would not stand for this. Mary gave birth to a son, but the story quickly circulated that the royal child had died and the child named James's heir was a foundling smuggled in. James, his wife, and his infant son were forced to flee; and James's Protestant daughter Mary was crowned the queen.

In spite of a strong resemblance to the king, the young James was generally rejected among the English and the Lowland Scots, who referred to him as "the Pretender." But in the Highlands the Catholic princeling was welcomed. He inspired a group known as *Jacobites*, to reflect the Latin version of his name. His own son Charles, known affectionately as Bonnie Prince Charlie, would eventually raise an army and attempt to recapture what he believed to be his throne. The movement was soundly defeated at the Battle of Culloden in 1746, and England and Scotland have remained ostensibly Protestant ever since.

**37. Which of the following sentences contains an opinion on the part of the author?**

- a. James was recognized to be a practicing Catholic, and his commitment to Catholicism would prove to be his downfall.
- b. James' son King Charles I proved himself to be less committed to the Protestant Church of England.
- c. The movement was soundly defeated at the Battle of Culloden in 1746, and England and Scotland have remained ostensibly Protestant ever since.
- d. Scholars in the 21<sup>st</sup> century are far too hasty in dismissing the role of religion in political disputes, but religion undoubtedly played a role in the problems that faced England and Scotland.

**38. Which of the following is a logical conclusion based on the information that is provided within the passage?**

- a. Like Elizabeth I, Charles II never married and thus never had children.
- b. The English people were relieved each time that James II's wife Mary lost another child, as this prevented the chance of a Catholic monarch.
- c. Charles I's beheading had less to do with religion than with other political problems that England was facing.
- d. Unlike his son and grandsons, King James I had no Catholic leanings and was a faithful follower of the Protestant Church of England.

# Answer Key and Explanations for Test #1

---

## Reading

- 1. C:** To *assuage* is to lessen the effects of something, in this case Adelaide's guilt over eating the piece of cheesecake. The context of the sentence also suggests that she feels sorry for eating it and wants to compensate the following day.
- 2. C:** This choice shows how greenhouse gases are released from burning coal and other fuels, which people need for power. The first, second, and third choices are facts, but don't show a relationship to the main idea.
- 3. A:** To find information on Freud's psychological theories, Lise should go to class 100.
- 4. C:** In this case, Lise needs to find a work of literature instead of a work of psychology, so she should consult the 800s.
- 5. B:** To study Jewish traditions further, Lise should consult the 200s, which is devoted to books on religion.
- 6. A:** The sample is biased because the study wishes to examine all middle school teachers' ideas, regarding usage of iPhones in the classroom, while the sample only represents ideas of those teachers teaching technology courses.
- 7. A:** The sentence indicates a contrast between the appearance and the reality. Enzo's friends believe him to be wealthy, due to the large home that he inherited, but he is actually penniless.
- 8. B:** The word SORT results from following all of the directions that are provided.
- 9. B:** The enrollment in 2001 falls directly between 2000 and 2500, so 2300 is accurate. Note that the enrollment for 2000 falls much closer to 2000, so 2100 is a best estimate for that year.
- 10. C:** The tuition appears to rise alongside the enrollment, until the year 2009 when it jumps significantly. Since the enrollment between 2008 and 2009 does not justify the immediate jump in income for the school, an increase in tuition costs makes sense.
- 11. B:** It can be concluded that phonics is a more effective way to learn to read for two reasons. First, the passage states that literacy rates are lower now than they were 15 years ago, meaning that more people knew how to read 15 years ago. Then, the passage states that phonics was the main way people learned how to read then. Therefore, based on these two facts, it can be concluded that phonics is more effective.
- 12. C:** The passage is *expository* in the sense that it looks more closely into the mysteries of the Bermuda Triangle and *exposes* information about what researchers have studied and now believe.
- 13. D:** This sentence is the best summary statement for the entire passage, because it wraps up clearly what the author is saying about the results of studies on the Bermuda Triangle.
- 14. A:** Of all the sentences provided, this is the one with which the author would most likely agree. The passage suggests that most of the "mysteries" of the Bermuda Triangle can be explained in a reasonable way. The passage mentions that some expand the Triangle to the Azores, but this is a

point of fact, and the author makes no mention of whether or not this is in error. The author quotes the Navy's response to the disappearance of the planes, but there is no reason to believe the author questions this response. The author raises questions about the many myths surrounding the Triangle, but at no point does the author connect these myths with what are described as accidents that fall "within the expected margin of error."

**15. C:** The inclusion of the statement about the ships from East Asia is an opinion statement, as the author provides no support or explanation. The other statements within the answer choices offer supporting evidence and explanatory material, making them acceptable for an expository composition.

**16. A:** When a researcher has conducted an original experiment and reports the results, findings, and associated conclusions in a research report, that report is considered a primary source. Academic textbooks, journal articles, articles in other periodicals, and authoritative databases may all be primary sources. When an academic textbook cites research (B) by others, that citation is considered a secondary source as it refers to information originally presented by others. When a news article quotes a researcher's writing (C), that is also a secondary source. So is a description given on a website of another person's research (D).

**17. B:** Only the word *introspection* can fall between *intrauterine* and *invest*. The words *intransigent* and *intone* come before, and the word *investiture* follows.

**18. C:** The chart shows that plastic and cardboard materials both comprise 15% of the collected materials, and therefore it is incorrect to say that there is more plastic than cardboard. They are present in equal quantities.

**19. D:** The spaghetti and the garlic bread are definitely concerns for Ninette if she is unable to consume products with wheat in them. With all other meals, there appear to be gluten-free options that she can eat.

**20. A:** The government website would publish the most recent data on seatbelt information, like how many people wore seatbelts in the accident and how many survived. Choices B and C are more likely to be opinion-based. Choice D is tempting, but it would not give someone the most up-to-date information.

**21. D:** The negative reviews led to the poor quality of the second movie.

**22. B:** This question and the two that follow require simple multiplication and addition. Since the quantities needed are the same for both texts, one need only find the supplier with the lowest combined price (per 100) for the two texts. Textbook Central's combined price for 100 each of the two texts is \$9,550. The closest competitor is University Textbook with a combined price of \$9,600. The other two suppliers come in at \$9,650 and \$9,675. The total for the transaction with Textbook Central is \$47,750.

**23. B:** Once again, Textbook Central prevails. In this case, it is not even necessary to do the calculations. The cost for composition textbooks is \$4350 (per 100) and for linguistics textbooks is \$6550 (per 100). The lower cost for the composition textbooks—\$150 less per 100 than the closest company in cost—outweighs the slight difference in cost for the linguistics textbooks.

**24. C:** Bookstore Supply has the lowest cost of the four for the technical writing textbooks, and it has a comparable cost to University Textbook for the world literature textbooks. The slight



difference for the technical writing textbooks will make the overall cost lower than University Textbook's and give Bookstore Supply the competitive edge in cost.

**25. C:** This should be read from the column labeled "Unadjusted percent change to June 2009 from June 2008", a period of one year. For transportation, the index is down 13.2%. This is the only negative change among the choices given.

**26. B:** Read this answer in the second column from the right. Fuel oil and other fuels decreased by 3.1% during this period. Gasoline increased by 3.1%. The other commodities decreased, but by lesser amounts.

**27. D:** In the table, components of each category are shown by indentation under the name of the category itself. There may be sub-categories within each category that are further indented. All of the Choices are indented under "Food at Home" except for "Alcoholic Beverages", which is a separate category.

**28. A:** Read this from the second column in the table, "Relative Importance December 2008". These numbers represent the average percentage of household budgets that are spent on the expenditure category. The greatest number, 43.421%, is on the row corresponding to housing.

**29. D:** Answer choice D is the only option that correctly follows the instructions in the question. Sections 4 and 5 are removed; section 1 is placed on the right sides along sections 3 and 2; and there is a circle drawn around the entire shape. Answer choice A places section 1 in the wrong location and fails to switch sections 2 and 5. Answer choice B incorrectly removes section 1 altogether. Answer choice C changes the shape of section 1 to a rectangle and reverses sections 2 and 3.

**30. D:** Anna is ultimately looking for a good all-around guidebook for the region. *The Top Ten Places to Visit in Brittany* might have some useful information, but it will not provide enough details about hiking trails, beaches, restaurants, and accommodations. *Getting to Know Nantes* limits the information to one city, and Anna's destination in Brittany is not identified. *Hiking Through Bretagne* limits the information to one activity. These three guidebooks might offer great supplemental information, but *The Complete Guide to Brittany* is the most likely to offer *all* of the information that Anna needs for her trip.

**31. D:** According to Figure 1, the radius is a bone in the lower arm. The femur, tibia, and patella are located in the leg. Therefore, choice D is correct.

**32. A:** According to the passage, the skull is part of the axial skeleton. Therefore, choice A is correct.

**33. B:** According to Figure 1, the metacarpals are located in the hand. The metatarsals are located in the foot. The fibula is in the leg, and the ulna is in the arm. Therefore, choice B is correct.

**34. B:** The passage does not state this outright, but the author indicates that the younger sons of King George III began considering the option of marrying and producing heirs *after* Princess Charlotte Augusta died. Since she was the heir-apparent, her death left the succession undetermined. The author mentions very little about any "wrongs" that Victoria's uncles committed, so this cannot be a logical conclusion. The passage says nothing about the Duke of Kent's preference for a male heir over a female. (In fact, it was likely that he was delighted to have any heir.) And the author does not provide enough detail about the relationship between the Duchess of Kent and King William IV to infer logically that his suspicions were "unreasonable" or that the duchess cared only for her daughter's well-being.

**35. C:** The author actually notes in the last paragraph that Victoria was an “improbable princess who became queen” and the rest of the passage demonstrates how it was a series of small events that changed the course of British succession. The passage is largely factual, so it makes little sense as a persuasive argument. The author mentions the Victorian Era, but the passage is more about Queen Victoria’s family background than it is about the era to which she gave her name. And the passage is more about how the events affected Victoria (and through her, England) than it is about the direct effect that George III’s sons had on English history.

**36. D:** This passage is most likely to belong in some kind of biographical reference about Queen Victoria. A scholarly paper would include more analysis instead of just fact. The information in the passage does not fit the genre of mystery at all. And since the passage recounts history, it is not an obvious candidate for a fictional story.

**37. D:** All other sentences in the passage offer some support or explanation. Only the sentence in answer choice D indicates an unsupported opinion on the part of the author.

**38. C:** The author actually says, “Charles’s own political troubles extended beyond religion in this case, and he was beheaded in 1649.” This would indicate that religion was less involved in this situation than in other situations. There is not enough information to infer that Charles II never married; the passage only notes that he had no legitimate children. (In fact, he had more than ten illegitimate children by his mistresses.) And while the chance of a Catholic king frightened many in England, it is reaching beyond logical inference to assume that people were relieved when the royal children died. Finally, the author does not provide enough detail for the reader to assume that James I had *no* Catholic leanings. The author only says that James recognized the importance of committing to the Church of England.

**39. A:** The author notes, “In spite of a strong resemblance to the king, the young James was generally rejected among the English and the Lowland Scots, who referred to him as “the Pretender.” This indicates that there *was* a resemblance, and this increases the likelihood that the child was, in fact, that of James and Mary Beatrice. Answer choice B is too much of an opinion statement that does not have enough support in the passage. The passage essentially refutes answer choice C by pointing out that James “the Pretender” was welcomed in the Highlands. And there is little in the passage to suggest that James was unable to raise an army and mount an attack.

**40. B:** The passage is composed in a chronological sequence with each king introduced in order of reign.

**41. D:** The passage is largely informative in focus, and the author provides extensive detail about this period in English and Scottish history. There is little in the passage to suggest persuasion, and the tone of the passage has no indication of a desire to entertain. Additionally, the passage is historical, so the author avoids expressing feelings and instead focuses on factual information (with the exception of the one opinion statement).

**42. B:** Both of the speakers are arguing over the respect due to an individual, but they are going about it in different ways.

**43. C:** This detail would only really support the argument against wearing school uniforms, while the other three choices could all appear as details in support of either side of the argument.

**44. A:** Technical passages focus on presenting specific information and have a tone of formality. Narrative writing focuses on telling a story, and the passage offers no indication of this. Persuasive writing attempts to persuade the reader to agree with a certain position; the instructor offers the