

Practice Exam Questions



Hewlett Packard
Enterprise



HPE0-S60

Delta - HPE Compute Solutions



EXAMKILLER

Help Pass Your Exam At First Try



Exam HPE0-S60

Delta - HPE Compute Solutions

Version: 4.1

[Total Questions: 79]

Question No : 1

Your customer plans to deploy VMware ESXi 7.0 U2, and they are looking for a hardware platform that will allow them to use up to 16 CPU sockets

Which HPE compute system meets the customer requirements?

- A. HPE ProLiant DL580 Gen10
- B. HPE ProLiant OL380 Gen 10 Plus
- C. HPE Synergy 480 Gen10 Plus
- D. HPE Superdome Flex system

Answer: C

Question No : 2


Which statement about a new HPE SimpliVity deployment is true?

- A. New HPE SimpliVity deployments give customer flexible choice of hypervisor
- B. All new HPE SimpliVity models are based on AMD CPUs
- C. All new HPE SimpliVity models support deduplication and compression
- D. New HPE SimpliVity deployments are licensed per node not per physical socket

Answer: C

Question No : 3 DRAG DROP

Match HPE SimpliVity team with the definition.

Term		Definition
Arbiter		Non-hyperconverged servers that can exist in an HPE SimpliVity environment and provide additional compute capacity while consuming the storage provided by the hyperconverged nodes.
Compute node		Provides centralized management and events end-point for vCenter.
Intelligent Workload Optimizer		Integrates with VMware Distributed Resources Scheduler to ensure optimal placement of the VM compute resources.
Management Virtual Controller		Facilitates communication between nodes and resolves state conflicts to ensure service continuity.

Answer:

Term		Definition
Arbiter	Arbiter	Non-hyperconverged servers that can exist in an HPE SimpliVity environment and provide additional compute capacity while consuming the storage provided by the hyperconverged nodes.
Compute node	Compute node	Provides centralized management and events end-point for vCenter.
Intelligent Workload Optimizer	Management Virtual Controller	Integrates with VMware Distributed Resources Scheduler to ensure optimal placement of the VM compute resources.
Management Virtual Controller	Intelligent Workload Optimizer	Facilitates communication between nodes and resolves state conflicts to ensure service continuity.

Question No : 4

Your customer has 6 logical enclosures spanning 18 HPE Synergy frames. The customer needs to add one more logical enclosure based on 5 HPE Synergy frames

How will this change impact the customer environment?

- A.** The customer can add a new logical enclosure to the existing setup because the maximum number of logical enclosures in a single management ring is not reached.
- B.** The customer has to expand the management ring capacity either by adding HPE Composer 2 modules or adding memory to reach 128GB per module.
- C.** The customer has to create a new management ring for new logical enclosure because the maximum number of frames in a single management ring is reached.
- D.** The customer can add a new logical enclosure to an existing setup once all required licenses are added to HPE OneView and associated with the new frames.

Answer: A

Question No : 5 DRAG DROP

Match HPE SimpliVity term with the definition.

Term		Definition
Arbiter		Non-hyperconverged servers that can exist in an HPE SimpliVity environment and provide additional compute capacity while consuming the storage provided by the hyperconverged nodes.
Compute node		Provides centralized management and events end-point for vCenter.
Management Virtual Controller		Integrates with VMware Distributed Resources Scheduler to ensure optimal placement of the VM compute resources.
Intelligent Workload Optimizer		Facilitates communication between nodes and resolves state conflicts to ensure service continuity.

Answer:

Term		Definition
Arbiter	Arbiter	Non-hyperconverged servers that can exist in an HPE SimpliVity environment and provide additional compute capacity while consuming the storage provided by the hyperconverged nodes.
Compute node	Compute node	Provides centralized management and events end-point for vCenter.
Management Virtual Controller	Management Virtual Controller	Integrates with VMware Distributed Resources Scheduler to ensure optimal placement of the VM compute resources.
Intelligent Workload Optimizer	Intelligent Workload Optimizer	Facilitates communication between nodes and resolves state conflicts to ensure service continuity.

Question No : 6

Your customer experienced some problems caused by outdated HPE Superdome Flex firmware. Which update method should they use to avoid these issues in the future?

- A. HPE OneView method for I/O firmware update procedure
- B. RMC CLI to update I/O and HPE Persistent Memory firmware
- C. HPE OneView IT HPE Persistent Memory firmware must be updated.
- D. HPE SUM if HPE Persistent Memory firmware must be updated

Answer: B

Question No : 7

Your customer has an HPE Synergy platform deployed and managed using HPE OneView. The customer also has HPE Superdome Flex with RMC deployed. They plan to deploy a second nPar and HPE Superdome Flex 280. They plan to manage new components using HPE OneView.

What must be done to achieve this goal?

- A. The customer must use IL05 to add HPE Superdome Flex systems to HPE OneView
- B. The customer should deploy an HPE OneView appliance for HPE Superdome Flex management
- C. The customer must add a second Rack Management Controller for HPE Superdome Flex 280
- D. The customer has to add HPE Superdome Flex to the HPE OneView used to manage HPE Synergy

Answer: C

Question No : 8

Which statement about HPE Superdome Flex 280 is true?

- A. It supports 2 to 8 sockets in 2-socket increments.
- B. it cannot be managed using HPE OneView.
- C. It must be equipped with at least 768 GB of memory.
- D. It can support up to two nPars with an external RMC.

Answer: C

Question No : 9

Which statement about manual orchestration during the firmware update is true?

- A. It is supported only for logical enclosures with at least three frames
- B. It provides an ability to select and update one side of the Interconnect topology at a time
- C. It provides the ability to install an older firmware version than currently Installed In the interconnect
- D. It allows all the interconnect modules to be activated manually at the same time.

Answer: B

Question No : 10 DRAG DROP

Your customer plans to use HPE OneView for VMware vCenter Server to deploy ESXi systems. They created a server profile template that they want to use in HPE OneView.

Put the steps required to configure HPE OneView for VMware vCenter Server on the left into their correct order on the right.

Steps	Answer Area
Add HPE OneView credentials to the vCenter Server and create OS Deployment Plan.	
Add vCenter Server to HPE OneView for VMware vCenter Server	
Deploy new ESXi systems using vCenter Server interface.	
Upload HPE-friendly ESXi image.	



Answer:

Steps

- Add HPE OneView credentials to the vCenter Server and create OS Deployment Plan.
- Add vCenter Server to HPE OneView for VMware vCenter Server.
- Deploy new ESXi systems using vCenter Server interface.
- Upload HPE-friendly ESXi image.

Answer Area

- Add vCenter Server to HPE OneView for VMware vCenter Server.
- Add HPE OneView credentials to the vCenter Server and create OS Deployment Plan.
- Upload HPE-friendly ESXi image.
- Deploy new ESXi systems using vCenter Server interface.

Question No : 11 HOTSPOT

After deploying HPE Superdome Flex 280 you need to check Core Analysis Engine (CAE) Log.

Click the appropriate section in the HPE Superdome Flex 280 management interface that will allow you to complete this task.

Answer:

**Question No : 12**

You need to configure a RoCE network to enable lossless networking for HPE J2000 Flash Enclosure support. Which interconnects are required to support this connection? (Select two.)

- A. HPE Virtual Connect SE 40Gb F8 Module for HPE Synergy
- B. HPE Virtual Connect SE 16Gb FC Module for HPE Synergy
- C. HPE Virtual Connect SE 100Gb F32 Module for HPE Synergy
- D. HPE Virtual Connect SE 32Gb FC Module for HPE Synergy
- E. Brocade 16Gb Fibre Channel SAN Switch Module for HPE Synergy
- F. Brocade 32Gb Fibre Channel SAN Switch Module for HPE Synergy

Answer: B,D

Question No : 13

Your customer wants to add a second HPE Synergy frame to an existing logical enclosure based on a single HPE Synergy frame. The customer wants to use a highly available master setup.

Which procedures should be performed during the expansion process? (Select two.)

- A. Create a new logical interconnect group and enclosure group for two frames setup

- B. Create a new logical enclosure based on both HPE Synergy frames.
- C. Re-parent an existing enclosure group to the new logical interconnect group.
- D. Modify an existing logical interconnect to include second HPE Synergy frame.
- E. Move one of the master modules to the appropriate interconnect bay in the second frame.

Answer: B,D

Question No : 14

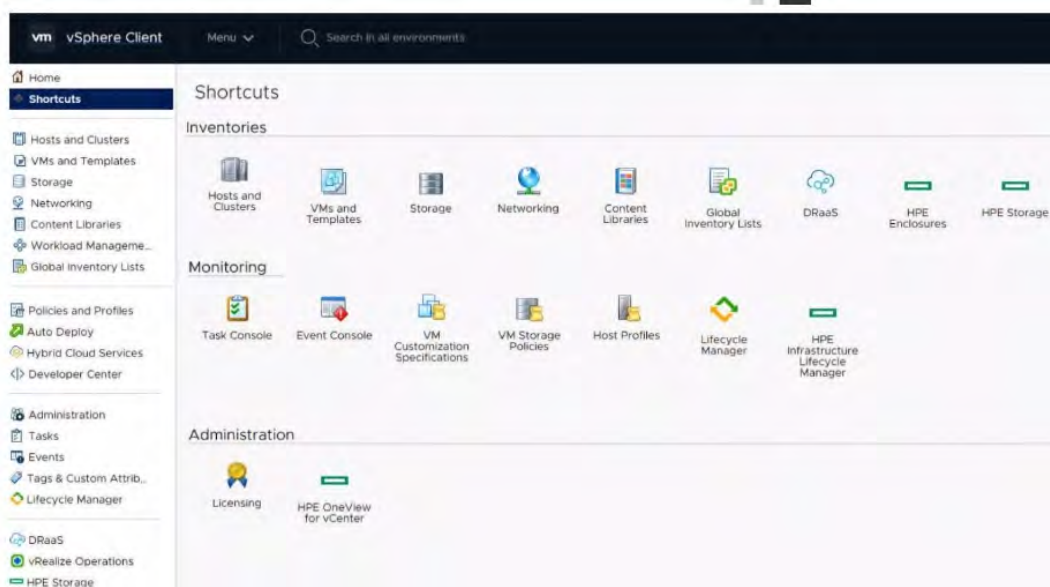
Which statement about login redistribution is true?

- A. Login redistribution is available only If HPE Primera or HPE Alletra is connected directly to the HPE Synergy frame
- B. Login redistribution is a licensed feature and the number of licenses required depends on the number of active ports
- C. Login redistribution is supported only on the HPE Synergy Virtual Connect SE 32Gb FC Modules
- D. Login redistribution is used for login balancing when they are not distributed evenly over the FC links

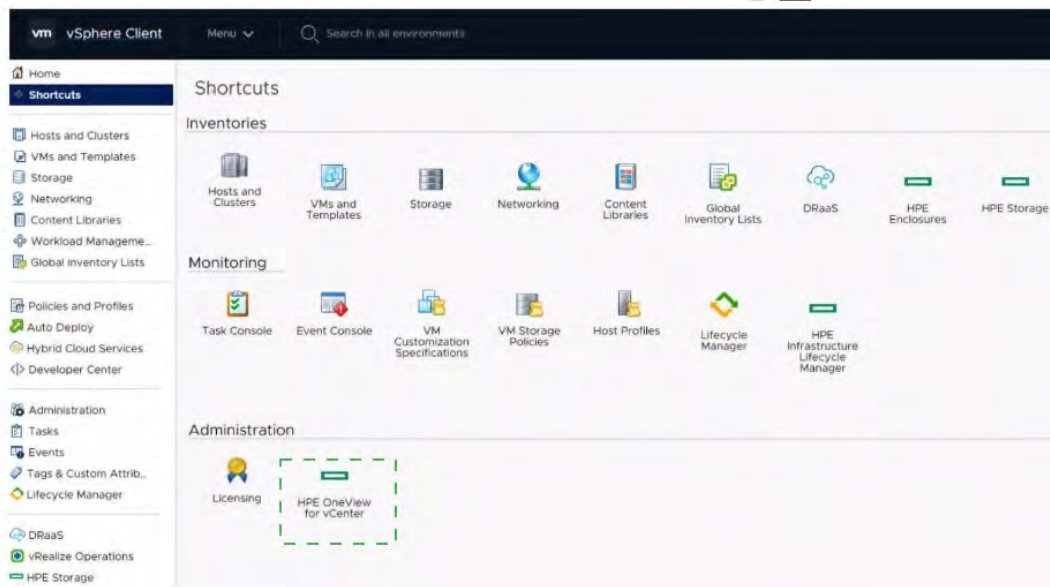
Answer: C

Question No : 15 HOTSPOT

Click the option that will allow you to change the ESXI image used In an OS Deployment Plan.



Answer:



Question No : 16

Which tool can be used to evaluate the health of an HPE OneView appliance before proceeding with an appliance update.

- A. HPE Composer Maintenance Console
- B. HPE OneView Update Readiness Checker
- C. HPE OneView Global Dashboard
- D. HPE OneView Firmware Compliance Report

Answer: A

Question No : 17

Your customer plans to setup an HPE Synergy solution based on SY480 Gen10 compute nodes with the following connectivity options - SAS connectivity installed in the first fabric - FC connectivity installed in the second fabric - Ethernet connectivity installed in the third fabric.

Which statement regarding this setup is true?

- A. Each compute node must have at least 768GB of memory installed
- B. Interconnect modules that provide SAS connectivity should be moved to the third fabric
- C. Each interconnect module in each fabric must be properly licensed in HPE OneView
- D. Compute nodes must have a second CPU installed to access the second fabric.