

Practice Exam Questions



Hewlett Packard
Enterprise



HPE2-K45

Using HPE SimpliVity



EXAMKILLER

Help Pass Your Exam At First Try



Exam HPE2-K45

Using HPE SimpliVity

Version: 3.0

[Total Questions: 40]

Question No : 1

What is the difference between crash consistent and application consistent cloning methods?

- A. Application-consistent clones allow the pending 10 operations to finish before committing them to the database.
- B. Both methods are the same; the only difference is speed of cloning.
- C. Crash consistent method should be used only for the virtual machines with Fault Tolerance enabled.
- D. Application consistent method is available only for Linux operating systems.

Answer: C

Question No : 2

Which HPE SimpliVity model can be equipped with the HPE mniStack Accelerator card?

- A. HPE SimpliVity 380 Gen10
- B. HPE SimpliVity 2600
- C. HPE SimpliVity 380 Gen10 H
- D. HPE SimpliVity 325 Gen10

Answer: A

Question No : 3

Which HPE SimpliVity Data Visualization Platform layer is responsible for storage and tracking of all data and metadata?

- A. Persistent Storage layer
- B. Presentation layer
- C. Data Management layer
- D. object Storage layer

Answer: A

Question No : 4

What can be configured using HPE Storence Management Console?

- A. Catalyst store
- B. backup policy
- C. storage policy
- D. deduplication ratio

Answer: C

Question No : 5

A customer wants to provide access to the HPE SimpliVity datastores for compute nodes running CPU-intensive virtual machines. What should you tell the customer?

- A. It is supported to connect up to 5 compute nodes per SimpliVity node.
- B. Additional license is required to connect ESXi nodes to SimpliVity datastores.
- C. Connecting ESXi compute nodes is possible only when VMFS datastores are configured at SimpliVity Federation level
- D. Compute nodes must reside in the same cluster as HPE SimpliVity nodes.

Answer: D

Question No : 6

You are designing an HPE SimpliVity solution with HPE Storence.

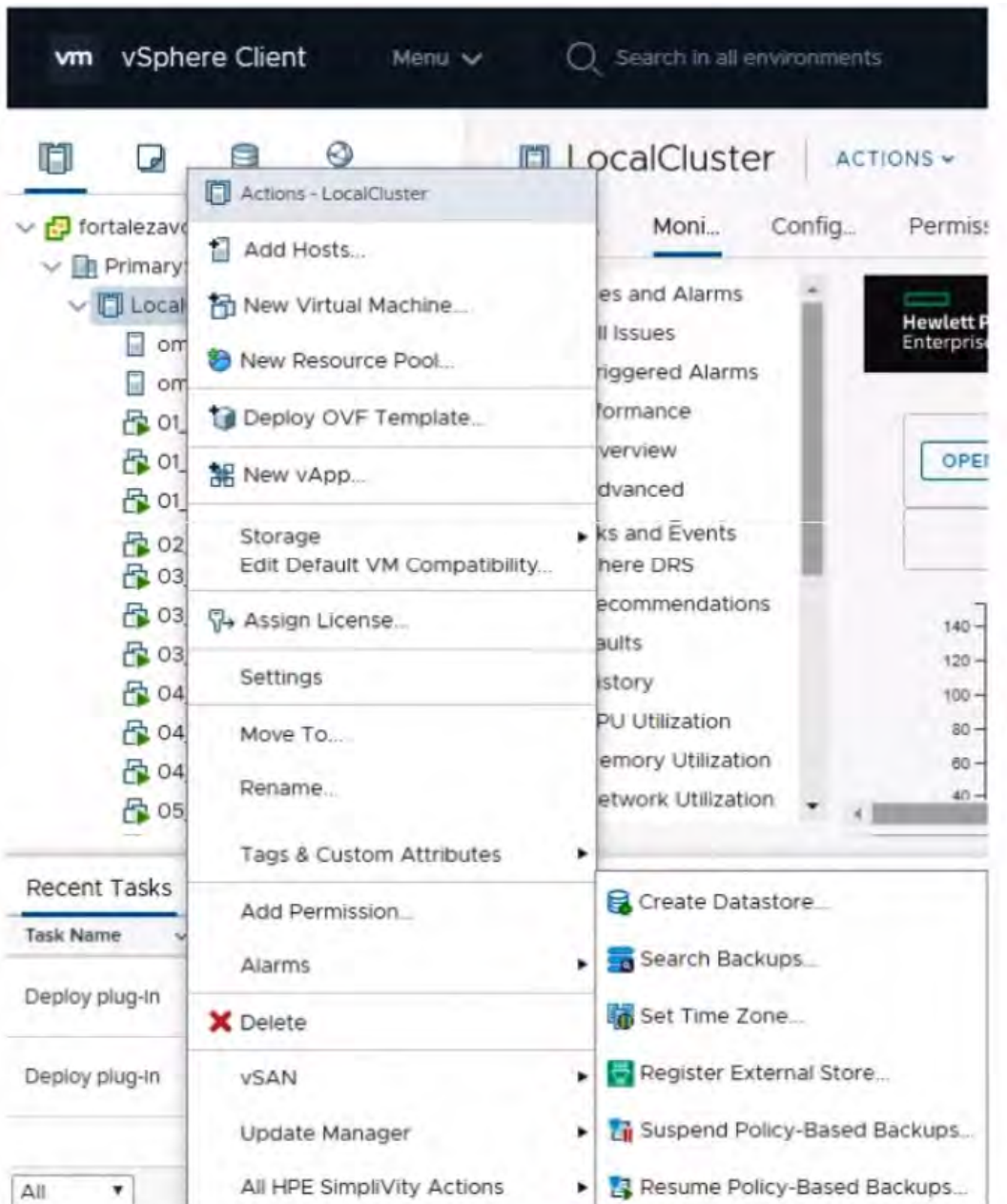
Which design aspects will you evaluate to optimize replication performance?

- A. Performance optimization features provided by VMFS datastores compared to NFS datastores
- B. Number of the HPE SimpliVity clusters and Catalyst stores used
- C. Intelligent Workload optimizer settings
- D. HPE SimpliVity model used

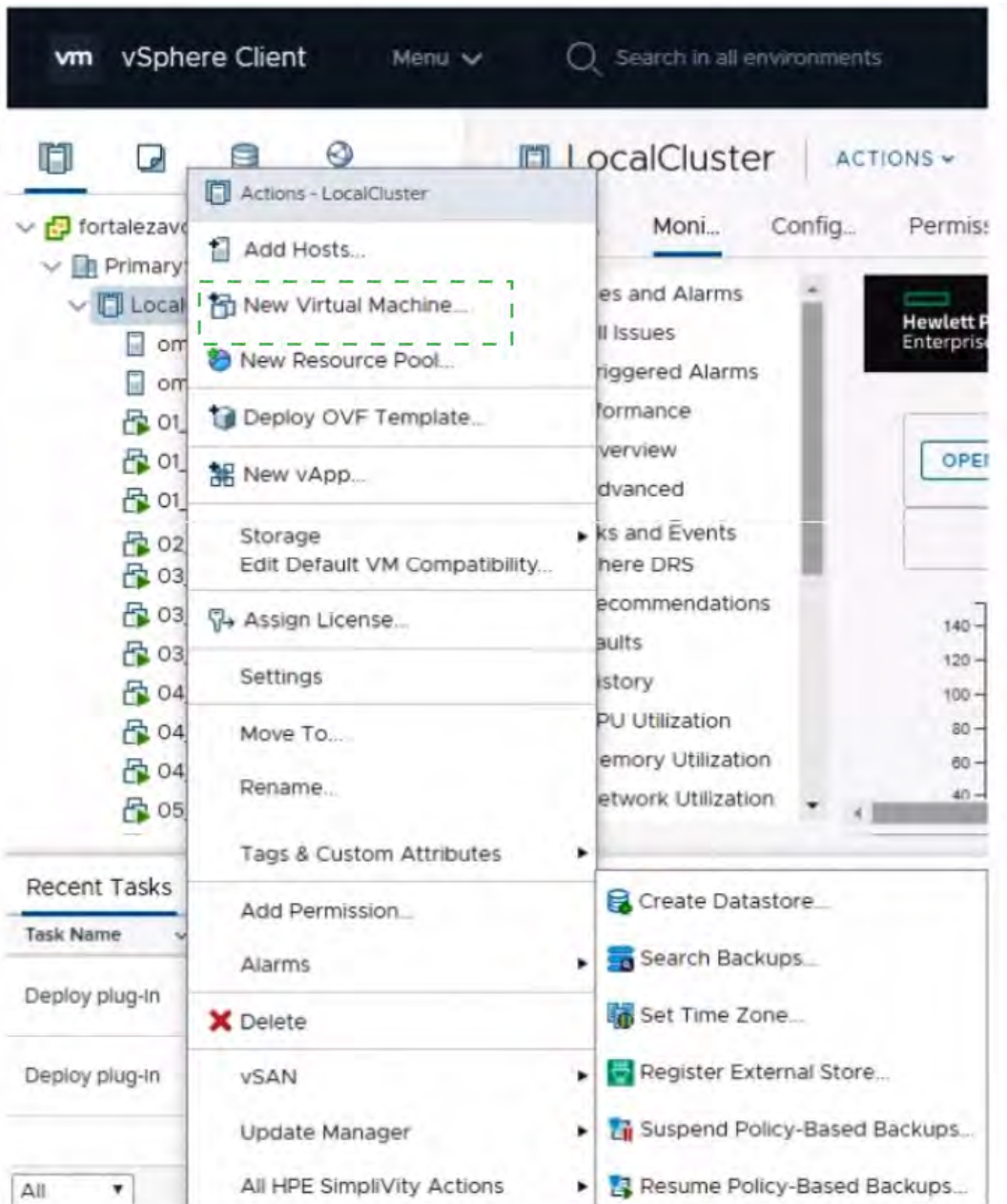
Answer: A

Question No : 7 HOTSPOT

Click the option that will allow you to integrate HPE SimpliVity with HPE Storence.



Answer:

**Question No : 8**

A customer wants to migrate virtual machines from the existing infrastructure to HPE SimpliVity. How can you complete this task?

- A.** Connect VMFS datastores holding the virtual machine files to HPE SimpliVity nodes, and migrate the virtual machines.
- B.** Share HPE SimpliVity datastores with standard ESXi hosts, and migrate the virtual machines.
- C.** Map VMFS datastores holding the virtual machine files as an RDM to HPE SimpliVity nodes, and migrate the virtual machines.
- D.** Add ESXi system to the HPE SimpliVity cluster, and migrate the virtual machines to

HPE SimpliVity datastores.

Answer: D

Question No : 9

A customer plans to mix nodes with different drive configuration in the same cluster. What should you explain to this customer?

- A. Mixing nodes with different drive configuration requires an additional license.
- B. Mixing different drive configurations within a cluster results in unbalanced 10 performance.
- C. Mixing nodes with different drive configuration is available only for AMD-based nodes.
- D. Mixing All-flash and hybrid nodes in the same cluster is supported.

Answer: C

Question No : 10

A customer has a remote office with very limited rack space. Which HPE SimpliVity model best meets this customer's needs?

- A. HPE SimpliVity 325 Gen10
- B. HPE SimpliVity 380 Gen10 G
- C. HPE SimpliVity 2600
- D. HPE SimpliVity 380 Gen10 H

Answer: C

Question No : 11

A customer is planning to deploy VDI infrastructure on HPE SimpliVity platform. They are considering implementing stretched cluster. Which statement regarding the design of a stretched cluster is true?

- A. Stretched clusters need additional licenses for VDI workloads,
- B. Stretched clusters support up to 96 HPE SimpliVity hosts.
- C. An Arbiter should be placed in a primary site and replicated to the secondary site.
- D. Both Linked clones and Full clones are supported on a stretched cluster.